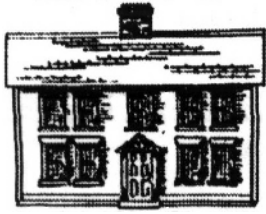


THE EAST PROVIDENCE HISTORICAL SOCIETY



John Hunt House

Gazette

Vol. XXIV No. 4

March 2012

President's letter

Nancy Moore, President



This is Tuesday, February 28, and it is 11:00 am. I have just walked out of the fully restored Weaver House on Grove Avenue, having attended

the ribbon cutting ceremony announcing that the house now has a certificate of occupancy and can be leased as offices. The East Bay Collaborative has already set up shop on the first floor. But the house itself was the main draw: beautifully restored woodwork, fireplaces, gleaming floors, new period lighting, a new kitchen area and bathrooms, all within the framework of a tall, strong, well-built Greek Revival. How proud all of us attendees were that we had had a part in saving this elegant jewel. As one person said, "I really did live long enough to see this!"

Our great thanks goes to the Planning Department under the direction of Jeanne Boyle which had a vision for the long haul and didn't lose that vision, even when the financial times got lean and the time frame got stretched. EPHS first started working to

save Weaver in 1984 and our efforts saved it from the wrecking ball at least once but, most importantly, the Planning Dept. knew they could count on our tireless support and today we all gave each other hearty thanks. So our heartfelt thanks go to Jeanne Boyle and her crew, Diane Feather, Jim Moran, Pat Hanner, and Nancy Remington. And a special thanks to David Bachrach who found the resources, both human and financial, to keep us believing this would happen.

And so that is the wonderful news! However, by no means is the quest for saving our important architecture over. Union Primary School still needs to be safely held and maintained by the City. And much discussion will need to occur about the fate of the Odd Fellows Hall on lower Warren Avenue. With the attention that Watchemoket has received this year, do people actually notice that fabulous blue derelict which is one of the first things you see as you cross the Washington Bridge? And wouldn't it be a preservation coup for the City if the OF Hall was so splendidly

restored that you noticed it FIRST of all and couldn't wait to find out what that splendid building was?

Well, as disappointed as I have been in the past with losses such as the Ide houses, today's success story pulls the believer in me to the forefront. Our preservation mission here in East Providence is clearly important and achievable if we hang in there for the long haul. We are definitely there!

501C3 Update

In order to have our IRS status fully reinstated, the general membership must vote to approve the following changes to our articles of incorporation. This vote will take place on March 26 and then the Secretary of State's office will accept and validate the changes and the documented changes will be sent to the IRS.

Continued on page #2



Visit us at
EPHIST.ORG

The Gazette

Is published monthly by the
East Providence
Historical Society

P.O. Box 4774
East Providence, RI 02916-4774
Tel. (401) 438-1750
Web Site: ephist.org

OFFICERS

Nancy Moore	<i>President</i>
Kris Rose	<i>1st Vice President</i>
Edna Anness	<i>2nd Vice President</i>
Cheryl Faria	<i>Recording Secretary</i>
Pat Henry	<i>Corresponding Secretary</i>
Dot Thornley	<i>Treasurer</i>
Kris Rose	<i>Immediate Past President</i>

COMMITTEE CHAIRPERSONS

Bob Tewksbury	<i>Buildings</i>
Jeffrey Faria	<i>Grounds</i>
Kris Rose	<i>Markers</i>
Mona Breault	<i>Membership</i>
Virginia Berwick –	
Karen Panzarella	<i>Museum</i>
Edna Anness	<i>Acting Curator</i>
Reinhard Wohlgemuth –	
Mona Breault	<i>Newsletter</i>
Nancy Moore	<i>Preservation</i>
Maggie Dooley	<i>Program</i>
Maggie Dooley	<i>Publicity</i>
Reinhard Wohlgemuth	<i>Webmaster</i>

The East Providence Historical Society

is dedicated to preserving the heritage
and enjoying the history of our city.

**If you are not a member we invite
you to join now.**

Annual dues are \$15 individual, \$25
family or business, or a Life
Membership for \$150.

Please make check payable to:

East Providence Historical Society

and mail membership form to

**Mona Breault, 23 Case Street,
Rumford, RI 02916**

President's Letter – From page #1

Other Thoughts

As I look at the Hunts Mills fish
ladder these days, I wonder
about the mild winter and
whether the migratory fish will
come early or at all. We hope
this is a matter of “Build it – they
will come,” but who knows? Are
you checking the fishing news?
Perhaps we will have exciting
photos for the April Gazette.



It seems an age since our last
meeting and Gazette but a round
of applause must go to Pat
Henry and her crew for staging
the December dinner meeting.
All was delicious and the many
hands made short work of
cleanup.

And traveling even farther back
memory lane we thank our
bakers for the November meeting:

- o Eunice Tuckerman
- o Linda Agresti
- o Andy Valerio
- o Mona Breault

Calendar Of Events

Please note that the Hunt House
Museum will remain closed until
Mother's Day, May 13.

March

Monday, March 26
Members Meeting - Public Invited
Newman Congregation Church
100 Newman Ave., Rumford, RI
6:00 pm
Potluck Supper
7:00 pm

**Vanity Fair – A Scrapbook Rises
from the Ashes**

A presentation by Louis Rhyner,
dealer in historic printed artifacts,
and Reinhard Wohlgemuth.
(See next page for additional
information)

April

Wednesday, April 4, 7:00 pm
Board Meeting – Members welcome
John Hunt House
Hunts Mills Road, Rumford

Monday, April 23, 7:00 pm
Members Meeting - Public Invited
Newman Congregation Church
100 Newman Ave., Rumford, RI
General von Steuben – The Ship



Membership Form

New

Renewal/Change

Name(s): _____

Street: _____

City: _____ State: _____ Zip: _____

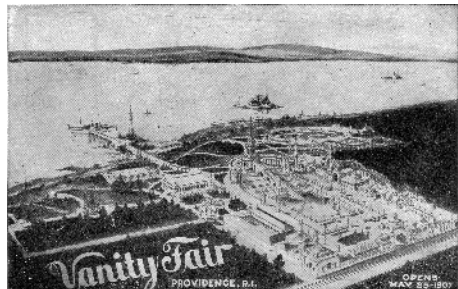
Phone #: _____

\$15 Individual

\$25 Family/Business

\$150 Life

March Program Vanity Fair – A Scrapbook Rises from the Ashes!



A talk about an exciting find from the Vanity Fair Amusement Park by Louis Rhyner, dealer in historic printed artifacts, and Reinhard Wohlgemuth, our web master and Gazette editor.

Louis Rhyner sees many interesting pieces of history come across his desk but one of the most exciting concerns our own Vanity Fair Amusement Park once located where the Silver Spring Golf Course is today. He has in his possession the daily record keeping / memorabilia book kept by the manager of the park, complete with signs of charring as it was rescued from the flames that destroyed Vanity Fair in 1912.

Now, we understand that this scrapbook has been sold, but Louis has agreed to present his talk for us after the potluck, and he promises to have the book with him. Member Reinhard Wohlgemuth, who has an excellent collection of Vanity Fair items himself, will be working with Louis on this presentation.

Please welcome the telephone committee when they call for food donations. It will be good to visit after our winter break.

A Farewell and Great Thanks to Our Gazette Gal Friday

This month Florence Adams called to say that her time as head of the assembly line for the Gazette must come to an end. Little by little, Florence has pulled in the strands of her long connections with EPHS. Last June, we saw our first Strawberry Shortcake desserts made without her guidance and this Fall she resigned as telephone committee chair. Now she has relinquished her role with the Gazette. We can count at least 25 years of dedicated versatile service to EPHS by Florence and George Adams. Need we say any more about volunteerism being the backbone of this group? Great thanks to you Florence!

In Memory Of:

**Dorothy Midgley
Thomas Stringfellow**



***Sadly missed...fondly
remembered***

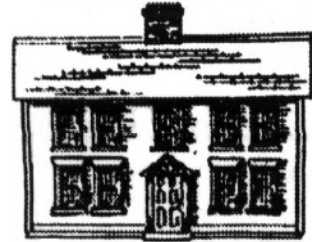


A warm welcome to our latest members.

- Raymond & Mary Pouliot
- J. H. Zumba

Museum News

By Edna Anness



Museum Committee Members

- Jesse Albright
- Nancy Stevens
- Virginia Berwick
- Karen Panzerella
- Rose Marie Sirenski
- Bob Tewksbury
- Maggie Dooley
- Deb Ormirod
- Nancy Moore (ex officio).

Historical Marker Program

Your home may be eligible for a marker. Any building in the City of East Providence which contributes to the historical development or architectural character of the City is eligible to be considered for a Historical Marker.

Request information by sending your name, address and phone number to the

Marker Program

East Providence Historical Society
P. O. Box 4774
East Providence, RI
02916-4774

Gifts to the Museum

Cindy C. Thrana

The check book stub of the Rumford Women's Club. Ms. Thrana was the last president of the Rumford Women's Club which started out as the Rumford JR. Women's Club and disbanded last year. The check book stub of the club will join other memorabilia from Rumford which we already have.

Jesse Albright

Three beautifully framed in gold views of Hunt's Mills. A large ad for a horse auction in East Providence. An ad introducing Dr. John Clancy who was running for the School Committee at the time.

Andy Valerio

An antique kerosene lamp which will be attached to a window frame.

Three silver looking Presidential platters.

George Page

A 1908 Rumford Cookbook.

Ms. Sousa

Two linen Townie hangings – 1974 and 1975
Ms. Sousa is the librarian at the East Providence High School.

Robin Burgess

An Armand Marseille doll with a mini Teddy Bear.
A full size Teddy Bear and silk pillow for the carriage in the second floor West bedroom.

Virginia Kent Berwick

Two bags of Kent papers.

Second Baptist Church on Taunton Ave.

Bags of papers regarding the church.
A wonderful communion set with all the glasses for the wine.

Hunt House Museum closed until May!

The Hunt House will not be open on the usual 2nd Sunday during March and April. We are currently having the outside painted by the Peterson Brothers and the April Open House falls on Easter. The museum will open again on May 13.

Proposed Amendments to the Articles of Incorporation

The bylaws committee asks you to review the proposed changes to our Articles of Incorporation. In order for us to receive the 501 C (3) status these additions are necessary. We need the 501 C (3) status to be able to apply for grant money from various sources.

A vote to approve the changes will be taken at our March 26 meeting.

**AMENDMENTS TO THE ARTICLES OF INCORPORATION FOR:
THE EAST PROVIDENCE HISTORICAL SOCIETY
65 HUNTS MILLS ROAD
EAST PROVIDENCE RI 02916**

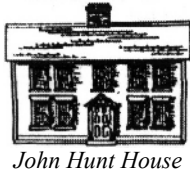
**FEBRUARY, 2012 TO BE INCLUDED WITH 1967 ARTICLES AND BYLAWS AS PER
THE IRS INSTRUCTIONS FOR RE-INSTATEMENT OF 501 C (3) STATUS AS
APPLIED FOR IN SEPTEMBER 2011**

TO BE ADDED TO ARTICLE #3:

Said organization is organized exclusively for educational purposes, including, for such purposes, the making of distributions to organizations that qualify as exempt organizations under section 501 C (3) of the Internal Revenue Code, or corresponding section of any future federal tax code.

TO BE ADDED: ARTICLE EIGHT: ARTICLE OF DISSOLUTION

Upon the dissolution of the organization, assets shall be distributed for one or more exempt purposes within the meaning of section 501C(3) of the Internal Revenue Code, or corresponding section of any future tax code, to the state of Rhode Island for a public purpose. Any such assets not disposed of shall be disposed of by a Court of Competent Jurisdiction of the county in which the principal office of the organization is then located, exclusively for such purposes or to such organization or organizations, as said Court shall determine, which are organized and operated exclusively for such purpose.



East Providence Historical Society
P.O. Box 4774
East Providence, RI 02916

Non-Profit Organization
U.S. POSTAGE PAID
Providence, RI
Permit #2712

RETURN SERVICE REQUESTED

Gardening Tips

By Jeff Faria, Master Gardener



Cut back the old stems of perennials during March to invigorate new growth for the spring. Thinning many plants by about 1/3 of the oldest, woody branches will encourage new shoots.

Gently push back into the ground perennials that have been heaved by freezing and thawing of the soil. This winter was milder and many plants are showing early signs of life.

Protect them from unusual damage by pushing them back in full contact with the soil.

Pruning of roses, fruit trees and perennials should commence this month. First, remove damaged canes, then assess the overall size and shape of the plant, while finally thinning out crossing branches which will reduce light exposure to the overall plant. You can almost NEVER prune too much!

Plant peas, beets, lettuce, chard, kale and broccoli this month. With this mild winter, I might push the envelope, but do not plant an entire pack of seeds. If you do not have good germination in the recommended 1-2 weeks, try some more seeds. Cover tender emerging

seedlings with a sheet or towel if a night gets really cold once they sprout. Good luck!!

Starting these seeds indoors and transplanting outdoors when there are 2 sets of leaves will ensure a more successful crop. This season is unusual, being the 4th warmest winter in over 100 years.

My mantra is, "10 minutes of weeding in March or April will save over an hour of weeding in June and July". Getting early spring weeds before they flower and set seeds will reduce the second flourish of weeds later on in the season.

I will have seeds for all members who attend the next member meeting on March 26!! URI has been generous once again!!