



## The East Providence Historical Society

# Gazette

Summer 2015

Volume XXVII No. 6

Dedicated to Preserving the Heritage and Enjoying the  
History of Our City

### June

Saturday, June 6  
10:00 am - 1:00 pm

National Trails Day  
Hunt House Museum  
open  
65 Hunts Mills Road,  
Rumford

Saturday, June 20  
Sunday, June 21  
9:00 am - 4:00 pm

URI Master Gardener  
Tour  
Hunt House Museum  
open  
65 Hunts Mills Road,  
Rumford

Monday, June 22  
6:00 pm

Picnic  
Annual Meeting  
65 Hunts Mills Road,  
Rumford

#### CONTACT US AT:

East Providence  
Historical Society  
P.O. Box 4774  
East Providence, RI  
02916-4774  
Tel. (401) 438-1750  
Email: info@ephist.org  
Web Site: ephist.org

## Summer Notes

By Nancy More, President

As you have noticed by the subtle colorations on the first page of this month's Gazette, the printer is fixed! The color really does enhance things doesn't it? Our thanks for your patience. The Board has decided to combine our May/June issues. That makes financial sense but it means you will not see another Gazette until September. So check this issue for all the details for the summer: picnic, dues, exhibits, open house days. We have a busy summer ahead of us with four open house days in June and a new exhibit to mount. As many of our regular docents will be taking vacation time, this might be a great time to find out if you would like to join that group. Please call Karen Panzarella at 481-5116 to volunteer - no experience necessary. Our visitors seem to react best to friendly faces with short answers. Possible docenting dates are June 6, 14, 20, 21 / July 12/ August 9.

We need to clarify some news about the Champlin grant announced last month. After trying to meet an April 30 application deadline and encountering some problems in the basement ceiling, the Board has decided to table application for the Champlin until the next round. That will assure us of having the lease resigned and all matters with the house resolved. The building committee has been hard at work getting bids for masonry and window repair for the 1772 Foundation Grant deadline June 5. This is a matching grant for exterior work only, and the masonry, chimney repointing and window work is our last piece of work in our 25 year lease plan - we have exceeded our goals for restoration.

Looking ahead to the Fall, we will be at Weaver again on Sept 28, participate in national Smithsonian Day on the 26<sup>th</sup>, have open house on the 13<sup>th</sup> and be a large presence at Watchemoket Square Day (date to be announced.)

Sadly, two longtime valued members have died since our last Gazette. Arline Butterworth, who served as secretary of the Board and was also

Continued on page 3

**The Gazette**

Is published by the  
East Providence  
Historical Society

P.O. Box 4774, East Providence, RI  
02916-4774  
Tel. (401) 438-1750  
Web Site: ephist.org

**OFFICERS**

Nancy Moore *President*  
Cheryl Faria *1st Vice President*  
Deborah Ormerod *2nd Vice President*  
Stephanie Poole *Recording Secretary*  
Pat Henry *Corresponding Secretary*  
Dorothy Thornley *Treasurer*

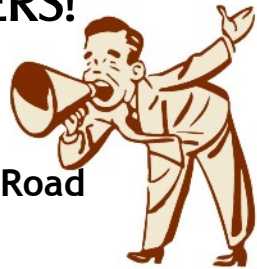
**COMMITTEE CHAIRS**

Brian Turgeon *Buildings*  
Jeffrey Faria *Grounds*  
Miriam Kenney *Membership*  
Karen Panzarella *Museum*  
Deborah Ormerod *Curator*  
Sandra Turgeon *Marker Program*  
Reinhard Wohlgemuth *Newsletter*  
Nancy Moore *Preservation*  
Nancy Moore *Programs*  
Nancy Moore *Publicity*  
Becky Ellis *Website Manager*

**NOT CALLING ALL MEMBERS!**

**PICNIC ALERT - JUNE 22<sup>nd</sup> - 6:00 pm**

**Hunt House Grounds - 65 Hunt Mills Road**  
**Members \$3.00 Guests \$6.00**



As you remember, we tried an experiment of NOT calling you for picnic attendance last year and the sky did not fall. Some of you called us so that we would have an idea of head count and we certainly appreciated that (438-1750). We also moved the picnic over onto the house grounds which proved to be a great idea. It was good to make use of the gazebo and be much closer to the house kitchen. So that's the plan for this year: NO call, no need to bring a dish to share (unless you'd like to).

Menu: hamburgers, hotdogs with all the fixings, and strawberry shortcake with Monroe Dairy donated whipped cream. Please join us! Come early and hang out with friends - dinner served at 6:00 pm.

**In case of rain, we will be at:  
Newman Church Hall - 100 Newman Ave.**



**The East Providence  
Historical Society**

is dedicated to preserving the heritage  
and enjoying the history of our city.

**If you are not a member we  
invite you to join now.**

Annual dues are \$15 individual, \$25  
family or business, or a Life  
Membership for \$150.

Please make check payable to:

**East Providence Historical Society**

and mail membership form to

**East Providence Historical Society**

**P.O. Box 4774**

**East Providence, RI 02916-4774**



**Membership Form**

New  
 Renewal/Change

Name(s): \_\_\_\_\_

Street: \_\_\_\_\_

City: \_\_\_\_\_ State: \_\_\_\_\_ Zip: \_\_\_\_\_

Phone #: \_\_\_\_\_

Email: \_\_\_\_\_

\$15 Individual

\$25 Family/Business

\$150 Life

**Summer Notes – continued from page 1**

available for any project going, died in April. Nancy Wolfe, who was active in so many different area groups and who gave us her undivided attention in the research realm, died in March. Both women were great stewards of East Providence’s past and the Society was enriched by their participation and knowledge.

**Library, 1<sup>st</sup> Baptist Tour**

The tour of the Rumford library and 1<sup>st</sup> Baptist Church was “over the top” as they say! Our great thanks go to Barbara and Bob Tewksbury for docenting the exquisite interior of the 1874 Walker designed church building. And great thanks also to Rita Danielle Steele for letting hordes of people invade her private space. The crowd just kept coming and she needed to be rescued so she could make her presentation at Church of the Epiphany. Our thanks to that church also for hosting the meeting - the sexton was more than accommodating but even we couldn’t have predicted the 90 or more people looking for seats for the presentation. Reinhard Wohlgemuth and Joyce May provided excellent, entertaining background on both buildings and we got photos and dialogue from Rita about the back breaking effort to transform the library. It is smashing indeed! And we hope that all those who took free seeds from the URI Master Gardener program will think of the EPHS as those seeds grow. Thanks to our own MG, Jeff Faria.



A few people took advantage of the advertised dues special:

- Carole DiFabio
- Alicia Ecklund & Tom Ramian
- Winifred Johannes

We also have two members who have upgraded their memberships to Lifetime:

- Nancy Stevens
- Tom Warzeka

Welcome to the new members and thank you for your continuing support to the members who upgraded their status to Lifetime.

**Nominating Committee Report  
Proposed Slate of Officers**

Nominating Committee Chair Reinhard Wohlgemuth presents the following slate for 2015-2016:

Nancy Moore	President
Cheryl Faria	1 <sup>st</sup> Vice President
Deborah Ormerod	2 <sup>nd</sup> Vice President
Stephanie Poole	Recording Secretary
Dot Thornley	Treasurer



The committee is grateful that these Board members have agreed to serve. Any other nominations from the floor may be made at the May members’ meeting. The annual election will be held as part of the June meeting.

**Thank You to Our  
Cookie Bakers**

Our last meeting at the Church of the Epiphany was very successful due in part to the snacks. The treats just vanished - a sign that our cookie bakers did another outstanding job. Thank you to all of you!

- Mona Breault
- Pat Henry
- Miriam Kenney
- Nancy Moore
- Debbie Ormerod
- Dotty Thornley
- Andy Valario

## The Curious Curator



The mirroscope was made by the Buckeye Stereopticon Co., Cleveland, Ohio, USA. Four models were offered by Gamages Ltd (London) in 1913, at prices from 15 - 42 shillings. This example is an improved model, with the addition of the two heat stacks directly above the light bulbs, designed to allow the heat to escape while preventing light from entering. Items to be projected are illuminated by two light sources (burners). The light from the item is then focused by an adjustable lens and projected on a screen or wall. Usually this object would be a postcard, photo, or other printed matter, but objects such as coins or leaves could also be projected. Heat from the light sources is removed using the two chimneys, located directly above the light sources, thus preventing any extra light entering.

Source:

(<http://museumvictoria.com.au/collections/items/721025/mirroscope-magic-lantern-projector-buckeye-stereopticon-co-1910>)

## "2<sup>nd</sup> Sunday" Summer Open Houses

June 14, July 12, August 13

Please join us at Hunt House for Ed Serowik's exhibit "More Fun in the Sun": the pictorial history of Vanity Fair, Boyden Heights and Hunts Mills amusement parks. These parks were open from 1895 - 1925 and none of them had the long run of Crescent Park, but each one was unique and has a fascinating history. And of course, at Hunt House, you can walk the midway, rest in the tea room, and sit on the granite stones marking the Loeff carousel: history coming alive.

### Hunt House and Grounds Will Be Open Three More Days in June:

#### June 6 - 10:00 am-1:00 pm - National Trails Day

The 10 Mile River Group and the Rumford /East Prov. Lions Clubs have been grooming Hunts Mills trails along the river. Come enjoy a walk to "Outlook Rock" and find the hollow tree.

#### June 20-21 - 9:00 am-4:00 pm - URI Master Gardener Tour

Hunt House has once again been chosen to be a site for historic gardening in this area. EPHS members will be welcomed those days without having to show a ticket program. This is your chance to talk with garden professionals about your gardening questions.

### Fish Tale 2015

This is the best news about fish in the 10 Mile River Corridor in 80 years! When the coffer dam was removed at the new Paul Bettencourt Denil ladder at Omega Dam, the herring were there: "build it, they will come!" On April 15, they swarmed up the ladder, heading for their spawning grounds and arrived at Hunts Mills on the evening of April 16. Even with very high, fast water, the fish, which had been imprinted on the Turner Reservoir, began their run and by Sunday evening, herring had been spotted at the Pawtucket Country Club dam, surprising everyone. 130 fish were officially counted in the Hunts Mills ladder which means that many more went up undetected. At Mother's Day open house, fish were spotted making the return trip. It is estimated that the river will support a 200,000 fish run. Anyone want to place bets on how many years that will take? Congratulations to the 10 Mile River Group and Paul Bettencourt and his pals! Well done!

## Gardening Tips

By Jeff Faria, Master Gardener

- Apply mulches around vegetables and flowering plants. Straw and dried grass provide a habitat for pest eating spiders!



- Mulch keeps soil moisture in and weeds out! Pine needles, shredded leaves, straw and wood chips make attractive mulches. Newspaper can be laid down as a base as well. Saltmarsh hay is excellent as mulch because its seeds will not germinate in a garden.
- Side dress vegetables by applying a nitrogen source such as 10-10-10 adjacent to, but not on, the plants. Fertilizers can burn tender leaves. Peppers need little fertilizer if soil is balanced. Tomatoes, eggplant and corn will benefit from a boost.
- Deadheading summer annuals will prolong their blooms and keep plants compact.
- Fertilize roses after their first flowers begin to fade. This will encourage a second flush of flowers later in the season.
- Cut leafy stems of basil, sage, rosemary and thyme for use and to dry for winter!
- In late July, sew spinach, lettuce and other leafy greens for a fall crop.
- Prune perennials after they flower for desired shape and physical structure. Sometimes, thinning the perennial by one third will rejuvenate a tired looking plant.
- Remember to raise your lawn mower height as the dry summer weather progresses. This will reduce weed seed germination and also strengthen the roots of your lawn. Do not fret over brown lawns, just take the day off!

## Notice Regarding July Dues Payments

All dues are payable in the month of July. They can be paid at the annual picnic in June, OR can be mailed in to the post office address found on page 2 of the GAZETTE. You can also download a membership application to print and mail from our website: <http://ephist.org/wp-content/uploads/2014/02/membership.pdf> This reminder will save us considerable postage, and we will be able to spend more money on programs for you!

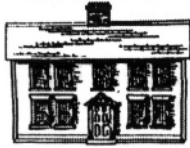
Thank you all for your continued support. We hope to see you this summer at the Hunt House for our open houses, the second Sunday of each month. If you have any questions about dues, please contact me at (401)434-9462.

Miriam Kenney  
Membership Chair



A reminder that you can catch up with what's current at the EPHS at [ephist.org](http://ephist.org).

Site wizard, Becky Ellis, has captured fish in the ladder, visitors on Mother's Day and the library tour. Take a peek.



*John Hunt House*

East Providence Historical Society  
P.O. Box 4774  
East Providence, RI 02916

**Non-Profit Organization**  
**U.S. POSTAGE PAID**  
**Providence, RI**  
**Permit #2712**

**RETURN SERVICE REQUESTED**

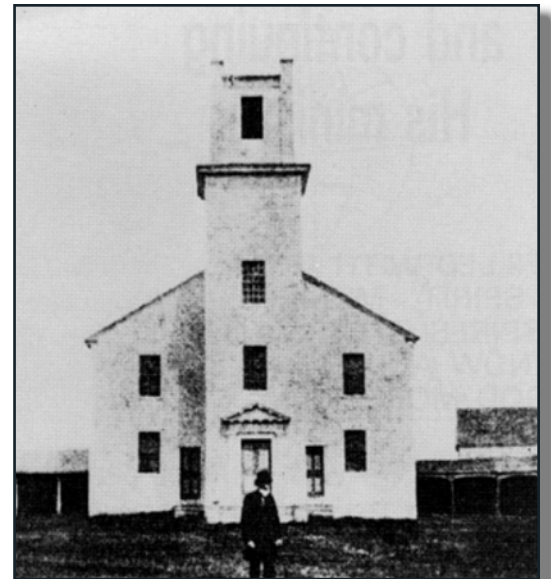
## We Are Sorry . . .



EPHS Collection  
Newman Congregational  
Church

In our April Gazette we incorrectly used the left photo as the original 1<sup>st</sup> Baptist church (then known as Baptized Church of Jesus Christ at Rehoboth First Precinct). As soon as the newsletters reached the members we were contacted by someone from Newman: “That is our church”. The photo had been filed wrong in our collection and is now stored in the right place. Our apologies to everybody who was confused by this.

The correct church photo is on the right; a similar building but not the same.



EPHS Collection  
Baptized Church of Jesus Christ  
at Rehoboth First Precinct