



John Hunt House

Gazette

Vol. XX No. 3

November 2007

President's Letter

Kris Rose, President

Dear Members,

The East Providence Historical Society and the Yankee Volunteer Fife and Drum Corp from Seekonk, will collaborate on a "Colonial Christmas" at the Hunt House Museum on Sunday, November 25. The house will be open and decorated. The Fife and Drum Corp will perform and a professional silhouette, paper-cutting artist will be available to "cut" your portrait for a fee. We will need volunteers to be in each of the rooms. Since the museum will be open from 11 to 4 p.m. that day, we can cover the rooms in shifts. If you can help out, even for a short while, call Ginny Berwick, 434-0998.

Jeff Faria, Grounds Chairman, is working with a committee to write a proposal to have the Hunt House Museum approved as a Master Gardner site. He is hoping it will be approved in the spring of 2008. Becoming a Master Gardner site will enable the society to continue developing the gardens and, over time, expand them.

As we have done in the past, we will be collecting non perishable food items at the November 26 meeting. Please be generous! Whatever is collected will be donated to the East Providence Food Bank.

It may seem early, but keep Monday, December 17 open for the society's annual Holiday Party. It will be catered by Young's Catering. Entertainment will follow dinner.

"THIS OLD (WEAVER) HOUSE"

Members Meeting

Monday, November 26, 7 p.m.

Department of Planning, City Hall

Are you curious about what is happening INSIDE the Weaver House, Grove Avenue, now that you have watched it come to life on the outside? If you like what you see and would like to know more about the nuts and bolts of this restoration, don't miss the November historical society meeting hosted by the Planning Department at City Hall. David Bachrach, coordinator of the project, Sterling Landry, restoration specialist and Michael Moran, Eagle Scout and landscape designer will speak about aspects of the project. (If you arrive a little early, the doors may still be open at the house and you may get a peek at the work first hand.)

Refreshments and business meeting will follow.



TRIBUTE TO DONALD BROTHERS MEMORY

Don Brothers passed away on November 4th. He was one of about a dozen core volunteers who restored the interior of the John Hunt House. Every Tuesday and Thursday for many years, Don and these men and women came to scrape paint, move radiators, paint, plaster and repair damages for three hours a day. Don is best known for his work with Bud Plummer when they restored the Adam style mantle in the parlor in 1990. It was painstaking

(Continued on page 3)

The Gazette

Is published monthly by the
EAST●PROVIDENCE●HISTORICAL●SOCIETY
 P. O. Box 4774, East Providence, RI 02916-4774
 Tel: (401) 438-1750 Web Site: ephist.org

OFFICERS

Kris Rose	<i>President</i>
Nancy Moore	<i>1st Vice President</i>
Edna Anness	<i>2nd Vice President</i>
Cheryl Faria	<i>Recording Secretary</i>
Pat Henry	<i>Corresponding Secretary</i>
Peter Allen	<i>Treasurer</i>
Nancy Moore	<i>Immediate Past President</i>

COMMITTEE CHAIRPERSONS

Bob Tewksbury	<i>Buildings</i>
Jeffrey Faria	<i>Grounds</i>
Kris Rose	<i>Markers</i>
Mona Breault	<i>Membership</i>
Virginia Berwick	<i>Museum</i>
Edna Anness	<i>Acting Curator</i>
Doreen Bonney/Florence Adams	<i>Newsletter</i>
Nancy Moore	<i>Preservation</i>
	<i>Program</i>
Florence Adams	<i>Publicity</i>
Reinhard Wohlgemuth	<i>Webmaster</i>

The Hunt House Museum,
Hunts Mills Road, Rumford,
 will be open on
Sunday, December 4, 1 to 4 p.m.
Admission \$3. \$1 East Providence Residents.
Free, Society Members

**RECOGNITION
 DEPARTMENT**

Edna Anness, Gladys Panzarella and Eunice Tuckerman baked goodies served at the October 29 members meeting held at the Indoor Tennis Court.

Lowell and Edna Anness, Jeff and Cheryl Faria, Pat Henry, and Gladys Panzarella served as museum docents on Sunday, November 11.

GIFTS TO THE MUSEUM

Jesse and Betty Albright - Quart size White Rock Kent Farm milk bottle to replace the one stolen from the Museum, very early E.P. liquor license, a salesman's reference book for the American Electrical Co., Phillipsdale, receipt for the purchase of a burial lot in old Carpenter Cemetery, wonderful list of all the dairies that ever existed in East Providence.

Lowell Anness - Uniform pants, mess kit and flask from World War I.

Ruth MacDougald - Her book "Long Ago and Far Away."

Andres and Toby Weiser - Thirty deeds, Theodore Hascall's will, assorted papers related to his family, an extraordinary Valentine written to Mr. Hascall during World War I from his soon-to-be wife.

Thank you. Your generosity is greatly appreciated!

The East ● Providence ● Historical ● Society is dedicated to preserving the heritage and enjoying the history of our City.

If you are not a member we invite you to join now.

Annual dues are \$15 individual, \$25 family or business, or a Life Membership for \$150.

Please make check payable to:

East Providence Historical Society

and mail with form below to:

**Mona Breault, 23 Case Street,
 Rumford, RI 02916**

Membership Form New Renewal /Change

Name(s) _____

Street _____

City _____ State _____ Zip _____

Phone # _____

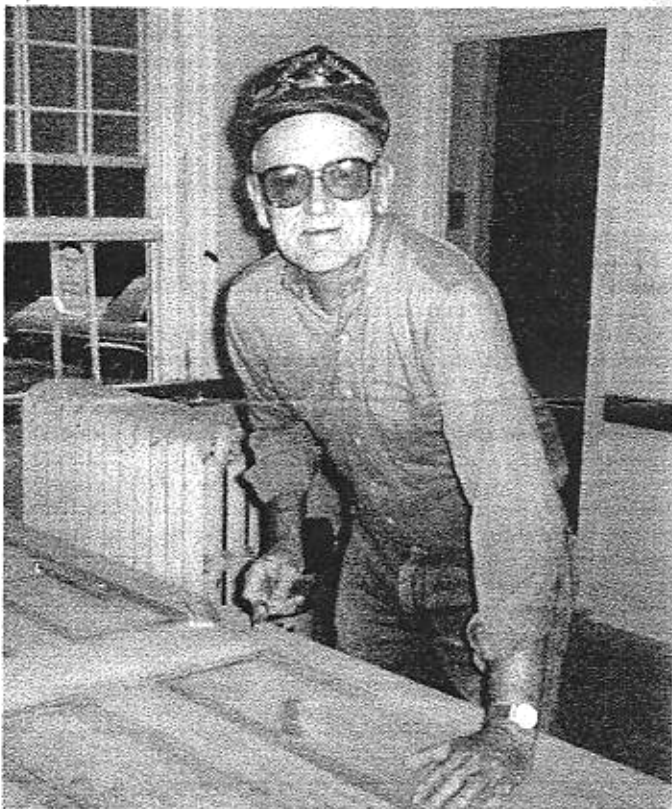
Amount Enclosed:

\$15 Individual **\$25 Family/Business** **\$150 Life**

Tribute to Donald Brothers Memory

(continued from page. 1)

work removing five coats of paint and not damaging the gesso figures. He plastered in the attic, wallpapered in the bedrooms, always cheerfully performing his assigned project. Don also was an experienced docent having been a docent at the John Brown House, Providence. He was wonderful doing the children's tours and was always willing to serve. He will be missed but his work can still be enjoyed.



Don Brothers working on a door in the parlor of the John Hunt House

**VISIT OUR WEBSITE
AT**

ephist.org



NOVEMBER

Sunday, November 25, 11 a.m. to 4 p.m.
**Hunt House Museum, Hunts Mills Road,
 Rumford**
"Colonial Christmas"

Monday, November 26, 7 p.m.
Members Meeting *Public Invited*
Planning Department, City Hall
Taunton Avenue, East Providence
Weaver House Restoration

DECEMBER

Wednesday, December 5, 7 p.m.
**Hunt House Museum, Hunts Mills Road,
 Rumford**
Board Meeting *Members Welcome*

Sunday, December 9, 1 - 4 p.m.
Hunt House Museum Open
Hunts Mills Road, Rumford
Admission \$3. \$1 E.P. Residents

Monday, December 17, 6 p.m.
Newman Church, Rumford
Holiday Party
Details to Follow

**WARM WELCOME
 TO OUR NEW MEMBERS**

**Lester Grace
 Anne Greene
 Karen Marshall**

A SIGNIFICANT EVENT

By John Agren

The teacher gave us an assignment: "Write about a significant event" so that's what I aim to do. Trouble is I don't know what is significant about the event I'm telling about and it is going to take a lot of writing to tell it. That's the trouble with writing. It takes a lot of discipline. Anyway, this involves a significant event in my younger life which took place about 1935 when me and Felix were going to the Wilson Grammar School on Bourne Avenue in Rumford, Rhode Island.

First off, let me tell you that Felix was a natural born liar and I knew that from first hand knowledge. He would do or say anything just so as he could be the winner at whatever was being measured. He could always swim the farthest under water and dive from the highest point into the least amount of water. His bicycle was the fastest and he could run the farthest and his father could beat up Joe Louis.

When we were promoted from the fourth grade of Miss Cute's Union Primary School to Miss Brush's fifth grade at the Wilson Grammar School, we had to make a new route to the new school. No more Union Primary School woods and no more Pawtucket Avenue Cemetery. Now our path would be past the Meeting House Pond, "Uncle Ray's" gravestone, the Rumford Baking Powder Company, the Rumford Post Office and then over the Greenwood Avenue railroad bridge.

Exploration of our new route to and from the new school got serious one time when we had to stay after school for some minor infraction of school rules. One of us got caught red handed passing notes to the other about one of the girls in our class. Felix blamed me for the note which was not unexpected by me. Felix told Miss Brush that maybe John Agren had forged his (Fee's) name on the document in question. Miss Brush knew Felix. He couldn't fool her!

Well, that night on the way home we discovered that the bridge over the railroad tracks at Greenwood Avenue had a bunch of iron beams and girders running east and west and up and down underneath the road. A kid could, if he was careful,

climb over these iron beams and girders and position himself directly over the train tracks when a train passed over the tracks and under the bridge. A red light went off in our heads when we were shaken up by the roar of a steam engine with a line of passenger cars headed north for the Narragansett Race Track. It was "The Gansett Special" going north to Narragansett with a train full of betting people. Narragansett was a major horse racing track then and every passenger train headed for the track from Providence had to pass under the Greenwood Avenue Bridge.

Anyway, getting back to "A Significant Event", Felix and I were going to have a contest at the expense of the next train. When a train passed under the bridge, we were going to see which one of us could "get" the most cars. We took our places among the girders and waited for a target.

We saw and heard a train as it rounded the corner of Roger Williams Avenue south of our girder perch. The signal to get ready was to be given by me when our train passed Burlingame's Hay and Grain Store a little south and west of the bridge on North Broadway. The big black engine had a super bright headlight that made it look like some big monster crawling insect from outer space. The engine sounded like thunder and was belching flames and smoke and fire like a dragon as we got ready for the contest to start.

When the train had passed Burlingame's, I hollered over, "Get ready Fee. Here she comes!"

We had big trouble holding our place on the girders. We had to hold on to the girder with our left hand and aim with our right hand. The train shook the bridge and sent up so much smoke and steam and so many sparks that I expected to be impaled on the huge smoke stack and be seen going towards the race track with the smoke stack passing through my stomach and my feet sticking away out in the air.

After the train had passed, I hollered over, "Hey Fee, I got ten, how many did you get?" (I didn't "get" ten. I only got five, but I knew that if I had said "I got five", he would have said "I got eight" but I thought that if I said "I got ten" Felix would

never have the gall to claim a higher number. How could he? There was only ten cars in the train!

But sure as shooting and without blinking an eye, Fee said, "I got twelve."

I hollered back, "You're a big liar. You couldn't have gotten twelve because there was only ten cars in that train."

He said, "Yea, but I counted the engine and the coal tender as cars, so I really got twelve."

"Fee", I said, "You're a big liar. I saw your stream and you didn't even get started till the engine and coal tender was past."

He said, "Yea, but I was still going after the last car went by and I COULD have gotten twelve if it wasn't such a short train."

Note: The other kid's name was not Felix! I had to use an alias for him because if his father found out it was him he would give him a licking. This is a true story. If you don't believe me, you can ask Felix.



The Society's *Memorial Fund* was established in 1993, in memory of past members, for "the betterment of the Society and with no specific purpose".

The *Memorial Fund* is a qualified endowment administered by the Executive Committee. Members and friends wishing to contribute may make checks payable to the

East Providence Historical Society

And mail to the Society at

Box 4774,

East Providence, RI 02916-4774

IN MEMORY OF

**Donald Brothers
Hazel Johnston**
who recently passed away

Sadly Missed.....Fondly Remembered

East●Providence●Historical●Society Historical Marker Program

Your home may be eligible for a **Marker**. Any building in the City of East Providence which contributes to the historical development or architectural character of the City is eligible to be considered for a **Historical Marker**.

Request information by sending your name, address and phone number to the

Marker Program
East Providence Historical Society
P.O. Box 4774
East Providence, RI 02916-4774

HOLIDAY PARTY

The society will hold a Holiday Party for members and guests on Monday, December 17, 6 p.m., Newman Church, Rumford. Details to follow in the December *Gazette*.





East • Providence • Historical • Society
P.O. Box 4774
East Providence, RI 02916

Non-Profit Organization
U.S. POSTAGE PAID
Providence, RI
Permit #2712

RETURN SERVICE REQUESTED

42 43

02916+2509-04 0003



TO ALL OF OUR MEMBERS:

HAVE A SAFE AND HAPPY THANKSGIVING!

