



OLDE NEWS

EAST • PROVIDENCE • HISTORICAL • SOCIETY
• NEWSLETTER •

PRESIDENT'S LETTER

This is the last letter I'll have to write for Olde News. I must confess that this is one presidential chore I won't miss!

While the past three years have certainly been interesting, the time had definitely come to move on and hand over the Society to new leadership. When we have capable people willing to direct the Society, to deny them the opportunity would be foolish.

Societies need change.

They either change or they die — it's as simple as that. To have the same people in leadership positions year after year is extremely dangerous to the future of this or any organization. New

MEETING



THE ANNUAL MEETING
OF THE
HISTORICAL SOCIETY
will be held June 24, 1991
from 7:15 pm
at Newman Congregational
Church.

ELECTIONS!!

(and more! see inside)

PRESIDENTS LETTER (cont.)

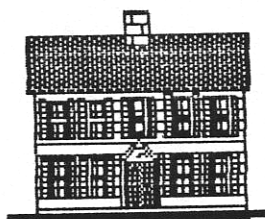
members must be made to feel that their ideas are welcome and that they'll have a chance to move into leadership positions if they choose; or they will lose interest, quit, and go on to something else, taking with them some of the enthusiasm and vitality that is the lifeblood of organizations.

So the changes that are coming are not only exciting but should also be revitalizing.

I'd like to thank everyone who volunteered during the past three years, especially the hard-working people who served as chairmen of the various committees. Your help was always appreciated and without you nothing would have been accomplished. The Society was extremely lucky to have such dedicated volunteers.

I'd also like to remind you to be kind to your new President. Too often people forget that the President is just a volunteer too.

Claudette Field

**OLDE NEWS**

published monthly by

The East Providence Historical Society

Editor George Field, IV

EAST PROVIDENCE HISTORICAL SOCIETY

P.O. Box 4774

East Providence, Rhode Island 02916

438-1750

OFFICERS

President	Claudette Field
First Vice-President	Scott Booth
Second Vice-President	Ginny Berwick
Secretary	Rose Marie Sirenski
Corresponding Secretary	Lura Sellow
Treasurer	Martha Rivas
Board Members-at-Large	Billie Arden Ellen O'Hare Nancy Stevens

SPECIAL EXECUTIVE COMMITTEE

Building	Scott Booth
Hunt House Restoration	Walter Vincent, Earl Berwick

STANDING COMMITTEE CHAIRS

Artifacts	Edna Anness
Grant Writing	Jewel Drickamer
Markers	Kit Rodman
Membership	Madeline Vincent
Newsletter	George Field, IV
Mailing subcommittee	F. Adams
Preservation	Nancy Moore
Program	Bill Simpson
Publicity	Florence Adams

PRESERVATION

Either the weather or the economy has certainly had an effect on the pressure of projects referred to this committee as of late. A record 0 (that's zero) referrals in the last month. Not that the old ones are entirely put to bed however! Consuming lots of time right now for members Bill Simpson and Nancy Moore is Bridgham Farm. If you attended the EP Land Trust's annual meeting you heard that the Trust for Public Land, a NATIONAL organization which helped secure Walden Woods in Concord, Mass., Sunset Farm in Narragansett, and the Martin Luther King Birthplace in Atlanta, among other projects, is now on board to help East Providence save this land for all its residents as passive recreation /conservation land.

We historical society members should take note that this special land with its 400 year old trees and wildlife habitat will be **300 YEARS OLD** as of 1993. What a wonderful birthday present for this land and for all residents to preserve it for 300 more years!

Please watch for the cable show "Inside East Providence" to learn more about this property and how you can help save it. If you wish to become a member of the Land Trust or take a tour of this precious land, please call Bill or Nancy.

Nancy Moore

BY-LAWS

After 14 meetings and 14 months, the Bylaws Committee has completed its charge, which was to review and revise the bylaws and come up with a Rules and Procedures Manual. The first draft of the bylaws has been presented to the members of the Board. The full membership will participate in the final approval at a later date. The Rules and Procedures will be scrutinized at the July Board meeting.

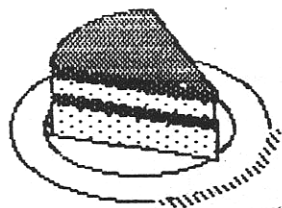
The Bylaws Committee, Florence Adams, Earl Berwick, Charles Gross, Rose Marie Sirenski, and Bill Simpson, a most congenial quintet, met at Charles and Fran Gross' house for all but one of the meetings. Bill Simpson

cont. on next page

BT-LAWS (ctd.)

hosted on that occasion. We appreciate their hospitality. It helped make our labor less laborious.

Florence E. Adams
Committee Coordinator

BREAD AND CIRCUSES

This month's meeting of the E.P. Historical Society is an important one, and your editor is urging you all to attend, for two very good reasons. Reason One is that the elections of the Society Officers for the year 1991-92 will be held this month. An all new slate of officers has been accepted at the May meeting, so this year will see a big "changing of the guard".

Reason Two is perhaps the clincher. (I know it is for me.) As an extra added attraction at our June meeting, Bill Simpson, Program Chairman and Caterer Extraordinaire will prepare strawberry shortcake for the all impor-

tant and vital refreshment break. (A modest contribution of \$2.00 is requested to defray expenses.)

Now with two reasons like this, I feel certain that we will have people coming in droves. The spectacle of the Annual meeting *and* strawberry shortcake! It doesn't get much better than this.

TRIBUTE

The flowers planted around the sign in front of the Hunt House didn't get there by magic. They were planted by Mary Ann Lomas as a memorial to former Society member Angela Heaton's mother, who always loved the Hunt House and was interested in our restoration effort. What could be a better memorial to someone than a beautiful bed of flowers?

(Your ob'd editor would be thankful just to have a sandwich named after him.)

ENCOUNTER IN NORUMBEGA

The Society is delighted to be one of the sponsors of "Encounter in Norumbega: The Hidden Story of Early New England Maps." This exhibit of early maps of New England and a series of discussions led by Nanepashemet, a Research Assistant and Manager of Native American Interpretation of Plimouth Plantation, will examine the earliest encounters between Native Americans and Europeans. The program begins on July 31 at the Carpenter Museum in Rehoboth MA at 7:30 pm, and the map exhibit will be at the Blanding Public Library in Rehoboth from June 20 to July 20, at the Carpenter Museum in Rehoboth from July 21 to August 21, and at the East Providence Public Library from August 22.

The map exhibit examines what these documents tell us about the Native American presence in our region, which was known by early European explorers as "Norumbega." The discussion series will detail the relation-

ships between the native peoples and the first European settlers, and the effects of the encounter on the ecology of the area itself. The discussions will be based on the maps and several texts which may be borrowed from either the Blanding Public Library or the East Providence Public Library during July and August. Call (508)252-9482 for more details.

"Encounter in Norumbega" is a project of the New England Foundation for the Humanities, with funding from the National Endowment for the Humanities. The exhibit and discussion series are sponsored locally by the Carpenter Museum, the Friends of the Blanding Library, the Old Colony Historical Society in Taunton, and the East Providence Historical Society. The programs are open to the public and free of charge, and more information regarding this important and interesting exhibit will be available at the E.P. Historical Society's June meeting.


 Letters and Comments


 OLDE NEWS

Wrentham, MA

02093

May 17, 1991.

Dear George:

Well I remember the little one room schoolhouse on the corner of Pawtucket and Vincent Avenues. We moved to Pawtucket Avenue in 1924, when I was goin' on seven and in September I started the second grade with Miss Pagny. (I don't know the spelling of her name, either, but that's how we pronounced it.) As I recall, Miss Pagny was short and rather plump and her white hair was pulled back into a little knot at the nape of her neck. She always wore a big apron over her dress and was a very strict teacher, but she certainly did know how to teach and keep us kids in line!

I remember, too, the little out-houses in back, one for girls and one for boys. When nature called during the day, we'd signify our need to go outside by raising one finger or two, according to the length of time we planned to stay there. (*Nicaly put, Ruth...ed.*) If

Miss Pagny thought we were out there too long, she'd call us to her desk and give us a peppermint tasting lozenge to eat. I still don't know if this was a reward or a punishment! We never questioned anything Miss Pagny did.

Another of her idiosyncrasies was the pronunciation of the word "the". We had to pronounce it "thee". "I see *thee* dog run. Do you see *thee* dog run?" we'd intone as we read from the big chart she had in front of the classroom. When I was very old and sophisticated and went to the third grade at big, busy Bright-ridge School one of the first comments my new teacher made was that she could always identify Miss Pagny's pupils by the way they read.

I remember Miss Pagny standing at the doorway of the schoolhouse and ringing a big handbell to call us in at 9:00 in the morning, after recess and after our lunch break. Where she came from or where she went no one seemed to know. She was always at school when we arrived and always there when we left for the day. We never saw her any place else

and never even considered that she might have a life away from our little red schoolhouse.

Ruth Marsden MacDougald
(Mrs. Joseph MacDougald)

AND SPEAKING OF ANNUAL MEETINGS. . .

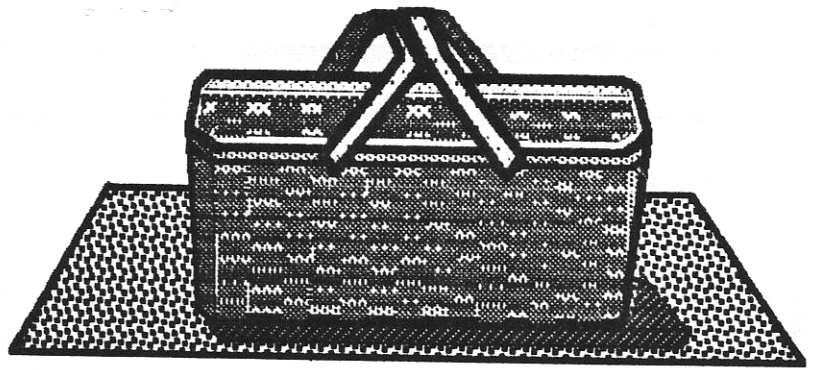
Dues are due at the Annual Meeting, (pro-rated if you joined in the middle of the year). Trust us!!!

IMPORTANT DATES

- | | |
|----------------------|--|
| Sunday, June 16 | Father's Day |
| Monday, June 24 | E.P. Historical Society , Annual Meeting and Election of Officers, Newman Congregational Church, Rumford, RI, 7:15 pm |
| Sunday, June 30 | E.P. Historical Society , Annual Picnic at Hunts Mills, Hunts Mills Road, Rumford RI. Picnic from 2:00 pm to dusk. (Burgers hit the grill at 5:00 pm) See our display ad on these pages.. |
| June 20 to August 22 | Carpenter Museum et al , Rehoboth MA. Exhibit: "ENCOUNTER IN NORUMBEGA: The Hidden Story of New England Maps" (see article in this issue for more details) |

DON'T FORGET: Workdays at the Hunt House every Tuesday & Thursday from 8am to 12 noon.

Christmas Bazaar Workshops are 10 am 'til 1 pm at the Hunt House every Wednesday from May to December (except July and August)



The Annual
E. P. Historical Society Picnic

SUNDAY, JUNE 30, 1991
at Hunts Mills from 2PM to dusk

**Barbecue at 5 PM, tours of Hunt House, games,
and socializing before and after!**

.....
Members free •• Guests, \$2.00 •• Reservations required
Call 438-1750 or 431-0257 before June 26th to join us..
.....

OLDE NEWS

East Providence Historical Society
P.O. Box 4774
East Providence, RI 02916

