



John Hunt House
Vol. VIII No. 2

GAZETTE

RIGHT ON.

SEPTEMBER 1995

THE EAST • PROVIDENCE • HISTORICAL • SOCIETY SALUTES THE

LOOFF CAROUSEL

CENTENNIAL

S
P
E
C
I
A
L

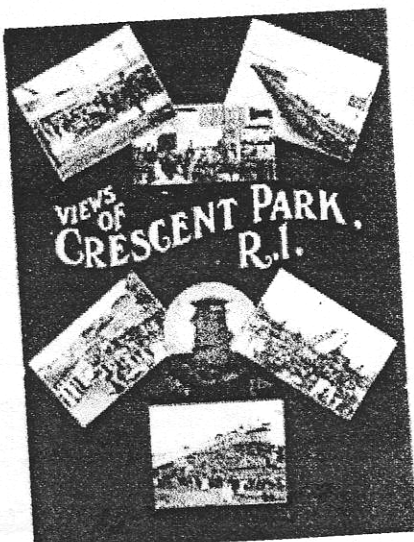
P
I
C
T
O
R
I
A
L

I
S
S
U
E



EPHist PHOTO

THE CAROUSEL AND OLD CRESCENT PARK IN PICTURES



Who is that ? (see page 3)

CALENDAR

SEPTEMBER

Monday, September 25, 7:30 p.m. monthly meeting:
Champlin Room, Weaver Library

"A Living Museum - The Loeff Carousel"

Alex Caserta, *photographer*, Mike Bell, *folklorist*, Sarah Gleason, *historian*

OCTOBER

Wednesday, October 11, Board meeting, 7:30, Hunt House.

Saturday, October 21, 6:00 p.m., Famous Ham & Bean Supper
Newman Congregational Church

Monday, October 23, 7:30 p.m. monthly meeting.
Bristol Room, Riverside Congregational Church
"Historic East Providence"

David Kelleher, *principal of Silver Spring School*, will discuss the history of the City and show more than 100 slides of old East Providence, featuring the three shore amusement areas, Crescent Park, Vanity Fair and Boyden Heights.



FROM THE EDITOR: We decided to devote this issue of the GAZETTE to the *Carousel Centennial* because centennials come around only every hundred years or so, and because we hear that our readers like looking at old pictures.

Thanks to Society member, **Bob Tetreault** for the use of his postcard collection, from which most of these pictures were made.

We hope that our readers will enjoy this pictorial trip to the Carousel and a look back at our **Crescent Park**.



the GAZETTE

is published monthly by the
EAST • PROVIDENCE • HISTORICAL • SOCIETY
Editor.....George Adams

EAST PROVIDENCE HISTORICAL SOCIETY
P.O. Box 4774
East Providence, RI 02916
(401) 438-1750

OFFICERS

President	L. Diana McLean
1st Vice President	Leslie Haworth
2nd Vice President	Lura Sellew
Recording Secretary	Elizabeth Soderlund
Corresponding Secretary	Gladys Panzarella
Treasurer	Rose Marie Sirenski

the GAZETTE

is printed
at

PRONTO PRINT

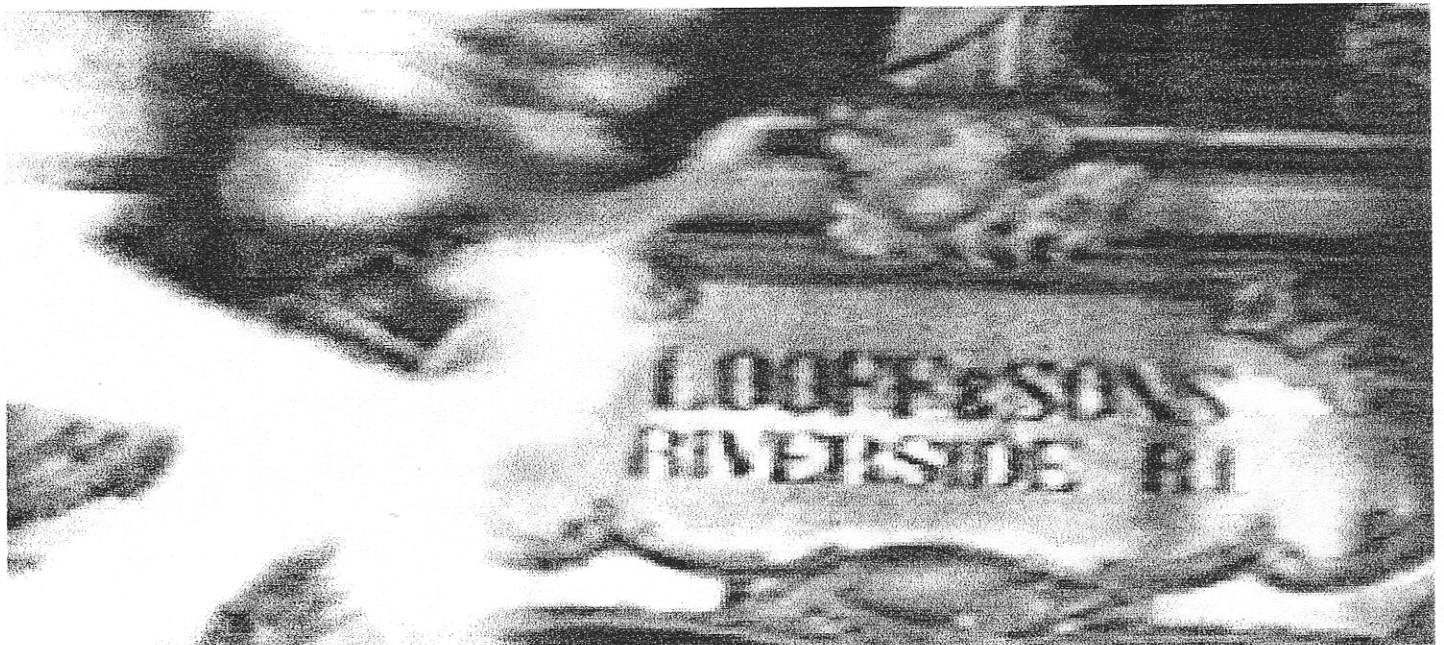
1062 Willett Avenue, Riverside

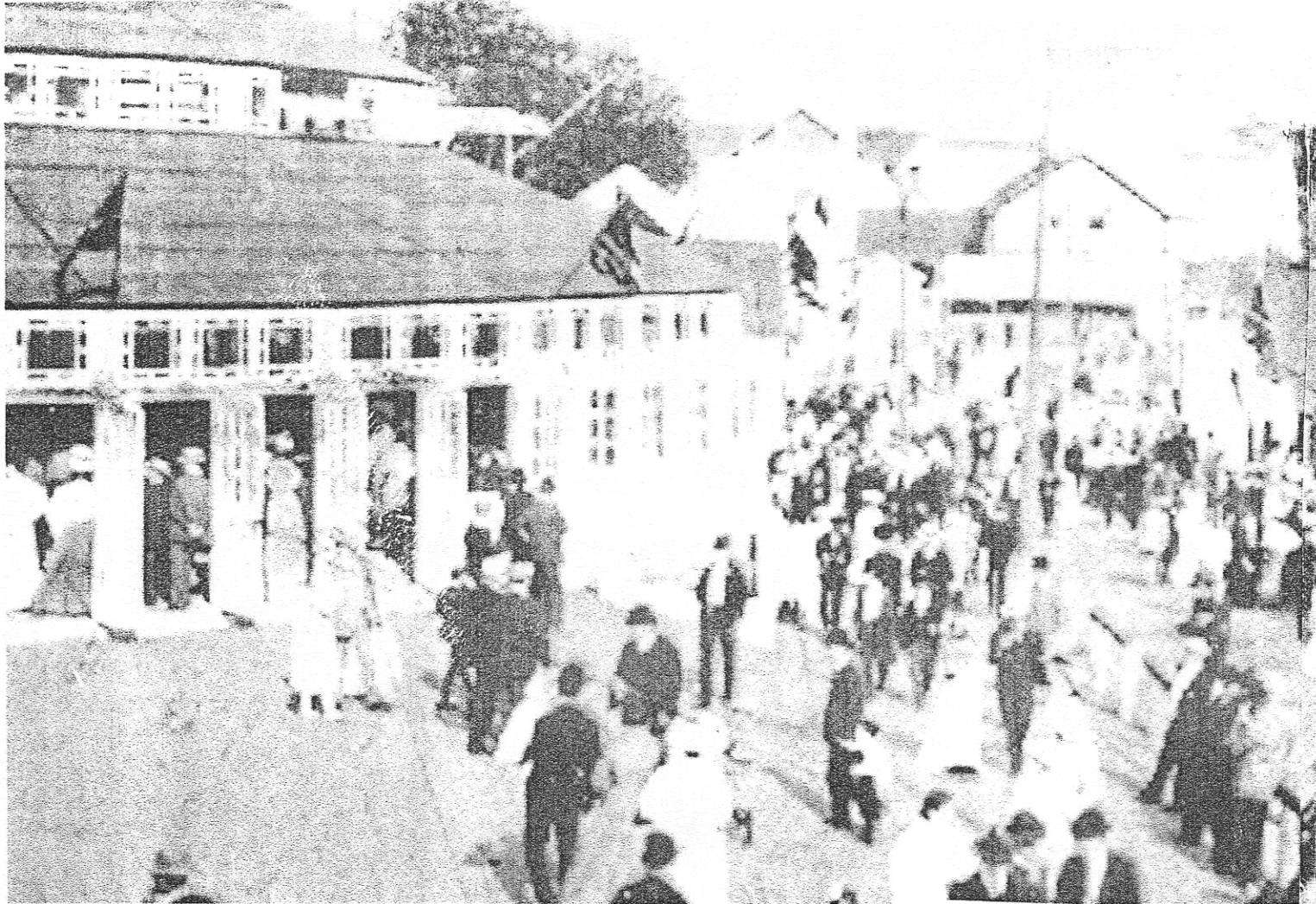


Factoid?..Charles Looff was his own model for those faces ?!

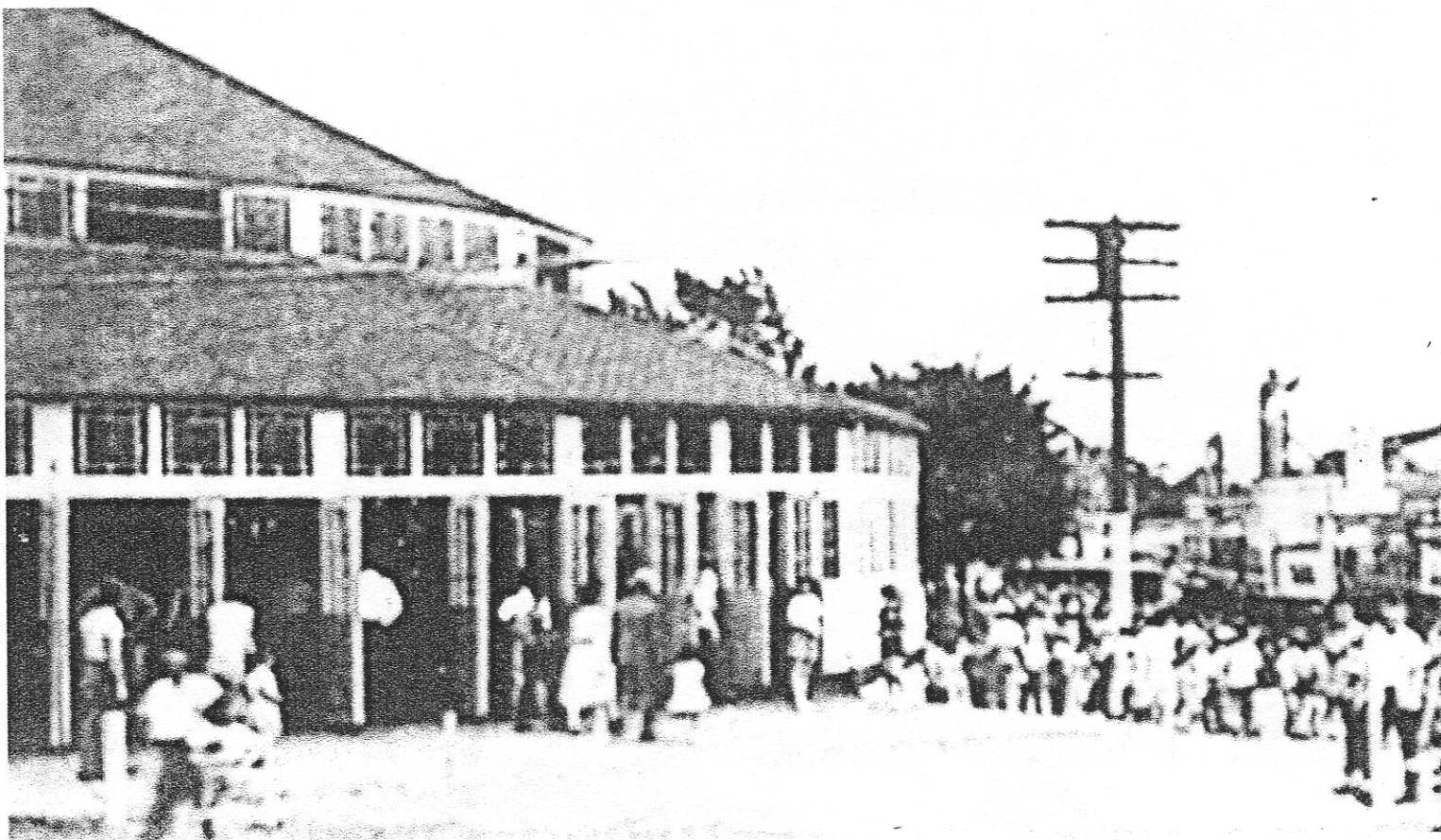
Brass Ring!

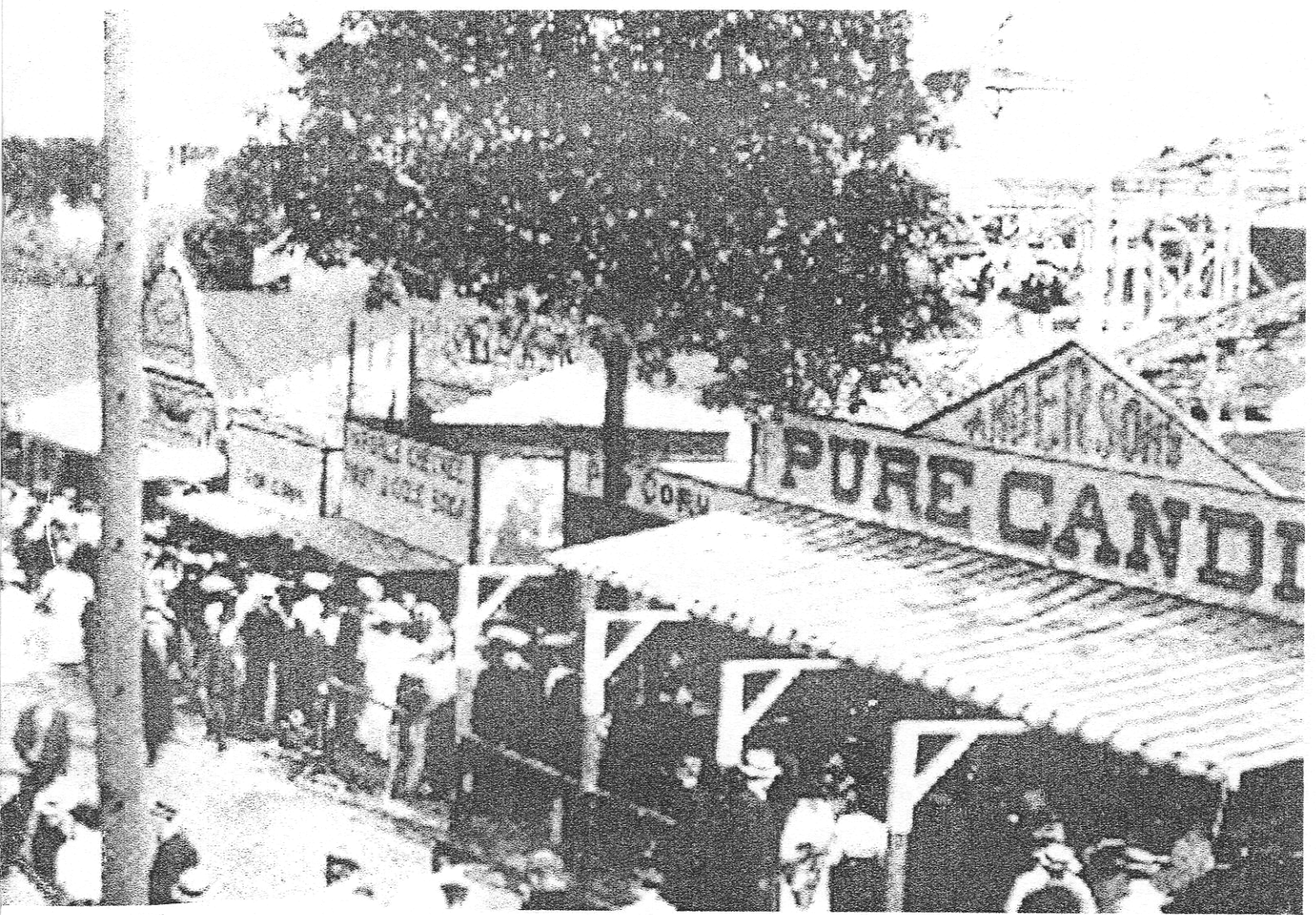
Fact: European carousels spin *clockwise*, Americans *counter-clockwise*... unwind in Europe.





THE MIDWAY .

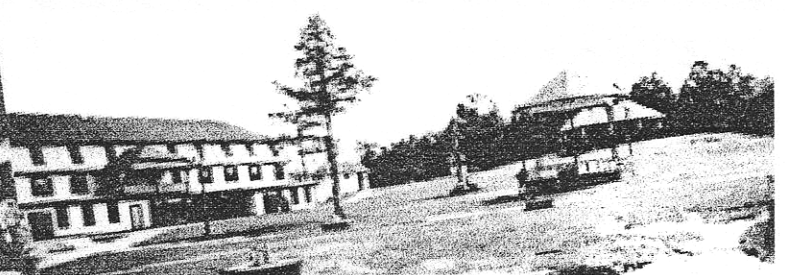
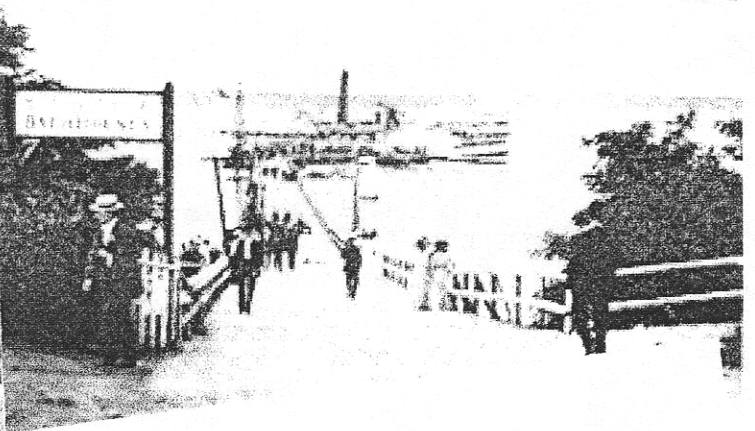
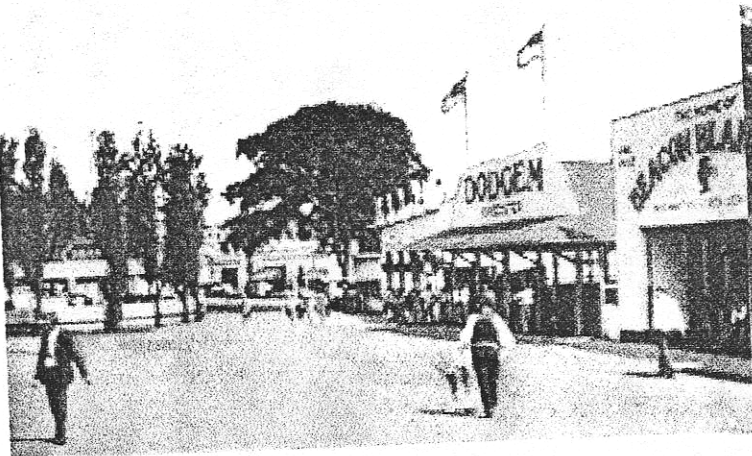
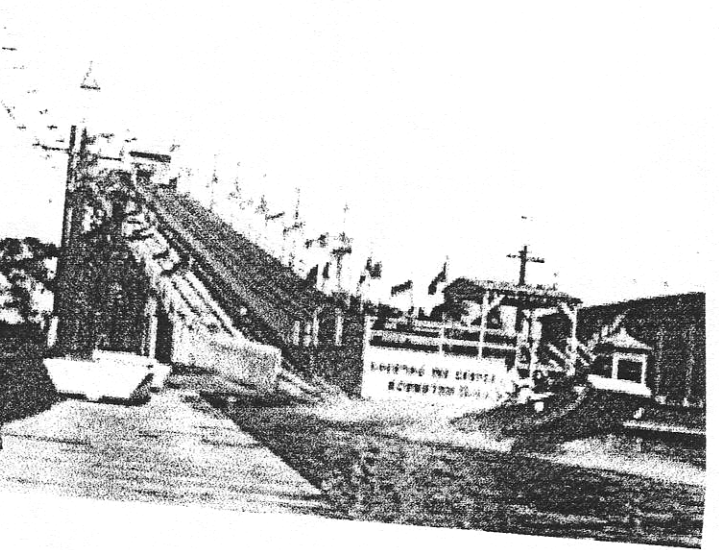
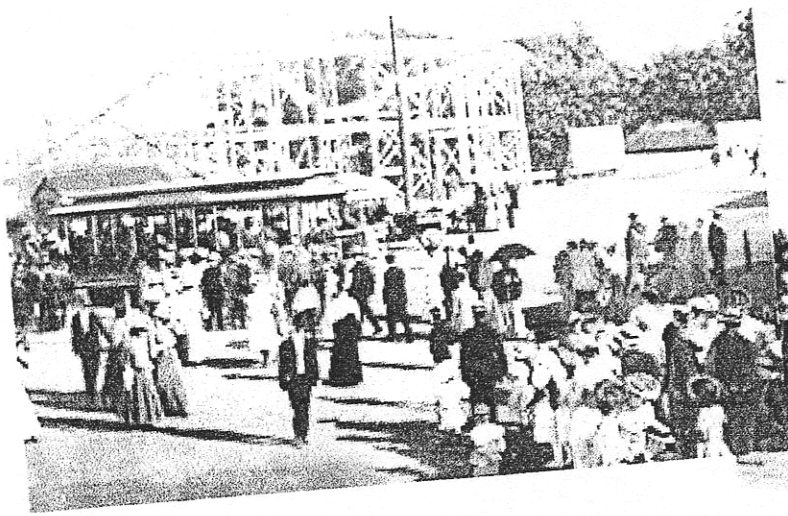




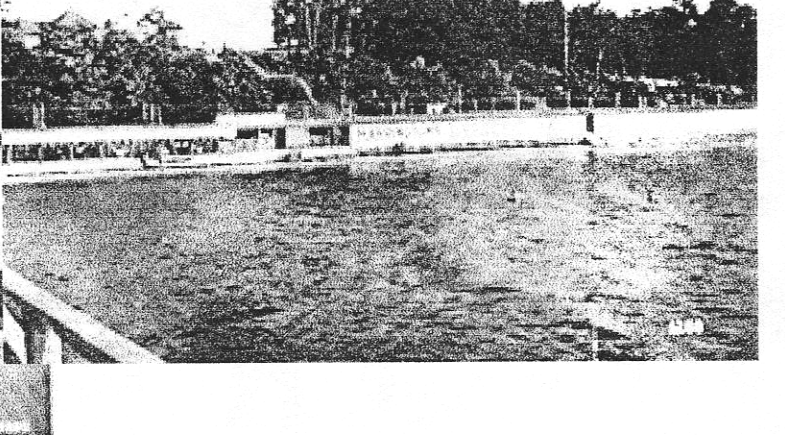
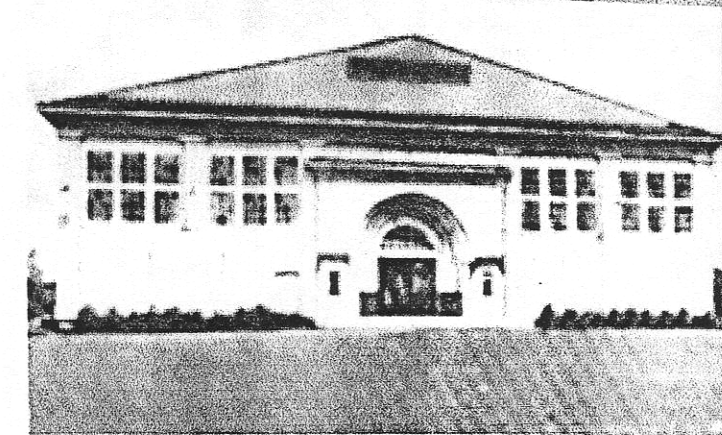
..... 2 ERAS



from the postcard collection of Robert Tetreault



Bathing House, Crescent Park, N. I.





History is FUN... Tell your friends

THE EAST•PROVIDENCE•HISTORICAL•SOCIETY

is dedicated to preserving the heritage and enjoying the history of our city.

If you are not a member, we invite you to join now. Annual dues are \$10.00, individual or \$15.00, family.
Please make your check payable to East Providence Historical Society, and mail with coupon below to:

East Providence Historical Society - membership
P.O. Box 4774
East Providence, RI 02916

NEW RENEWAL

EAST•PROVIDENCE•HISTORICAL•SOCIETY

NAME (s)

STREET

CITY

STATE

ZIP

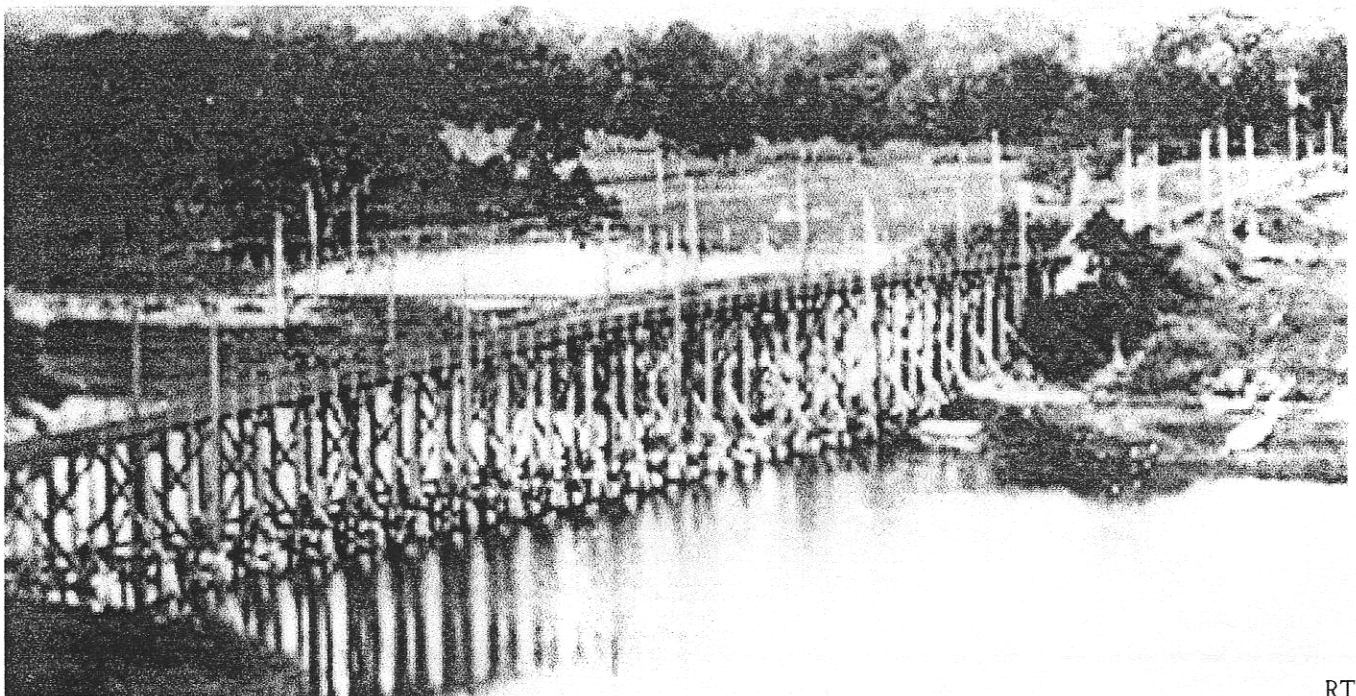
TELEPHONE

AMOUNT ENCLOSED \$

@ 10.00 INDIVIDUAL, 15.00 FAMILY

Non-Profit Organization
U.S. POSTAGE
PAID
Providence, RI
Permit # 2712

GAZETTE
EAST • PROVIDENCE • HISTORICAL • SOCIETY
P.O. Box 4774
EAST PROVIDENCE, RI 02916



RT

The Trestle to Crescent Park originally for electric trolley cars, later that familiar footbridge from which you could hear the sound of the Carousel and the screaming from the roller coaster . . . and smell the popcorn !

+

+