

John Hunt House

Gazette

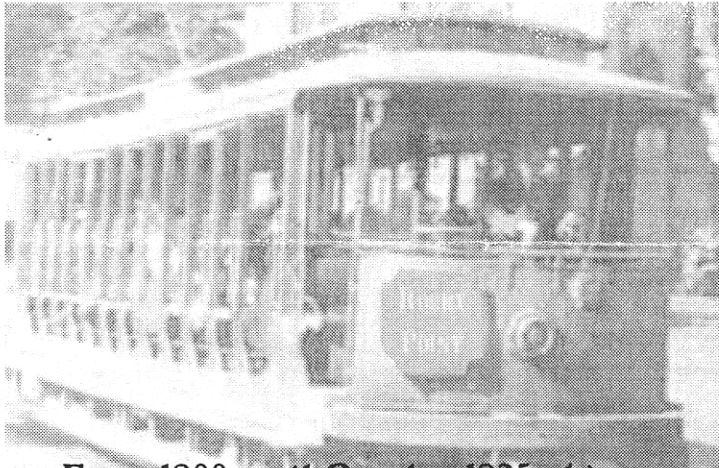
“TAKE THE TROLLEY TO THE SHORE”

A ride to Rocky Point, Oakland Beach, Buttonwoods and all the stations in between.

Everett A. Chapman, Collector/Historian, Guest Speaker

Monday, January 28, 7:30 PM, Newman Church, Rumford

Pot Luck Supper at 6: PM*



From 1900 until October 1935, this wonderful 13 mile trolley line was there for all to use. And over the course of time, millions did. The question is asked, "What if this line had survived? How would it have affected our lives today?" A ride on an open car is just a dream today. How refreshing it must have been as one rolled along the shore in Warwick Cove, crossed the trestle and swing bridge and squealed to a stop at Oakland Beach Station. For in those days, there were many hotels, shore dinner halls, restaurants and all sorts of amusements. People from all over New England and beyond came to enjoy the salt air of our wonderful Rhode Island.

If one wanted to travel farther down the line, the trolley would hum along through the sun and sand and arrive at Brushneck Cove and the Longwood pile trestle that carried one across a stunning body of water to the end of the line at Buttonwoods.

We have saved the most exciting for last; . . . Rocky Point. Countless millions traveled there by taking the trolley. There was a branch line at Grant's Station where one could switch to ride the trolley to the park. The way we move people makes a difference.

If you close your eyes, you can almost feel the rocking of the car and smell the salt air Getting there was part of the fun.

** Members will be contacted by the Telephone Committee to coordinate the food arrangements*

The Gazette

is published monthly by the

EAST•PROVIDENCE•HISTORICAL•SOCIETY

P.O. Box 4774, East Providence, RI 02916-4774

Tel: (401) 438-1750 E-Mail: ephist@home.com

OFFICERS

- David Kelleher *President*
- Nancy Moore *1st Vice President*
- Raymond Anderson *2nd Vice President*
- Jo Marchi *Recording Secretary*
- Gladys Panzarella *Corresponding Secretary*
- Peter Allen *Treasurer*
- Robert Tewksbury *Immediate Past President*

COMMITTEE CHAIRMEN

- Earl Berwick *Buildings*
- Ray Anderson *Grounds*
- Kris Rose *Markers*
- Mona Breault *Membership*
- Virginia Berwick *Museum*
- Edna Anness *Museum Curator*
- George Adams *Newsletter*
- Les Haworth *Preservation*
- Ray Anderson *Program*
- Florence Adams *Publicity*

The John Hunt House Museum is Closed

through January and February
except *by appointment*
telephone the Society at (401) 438-1750
to make arrangements.

MARK YOUR CALENDAR

**Members Meeting Monday, February 25, 7:30 PM
Newman Church, Rumford**

David Goldberg, representing *Rhode Island Recycle Recovery Corporation*, will discuss the history and future of **trash disposal** with special attention to the importance of **recycling. Very Important !**

There will be a Pot Luck supper at 6:00 PM.
(*which should produce some trash*)

**Members Meeting Monday, March 25, 7:30 PM
Newman Church, Rumford**

THE EAST•PROVIDENCE•HISTORICAL•SOCIETY

is dedicated to preserving the heritage and enjoying the history of our City

**If you are not a member
we invite you to join now**

Annual dues are \$10 individual, \$15 family or a Life membership for \$150.

Please make check payable to:

East Providence Historical Society

and mail with form below to:

**Mona Breault
34 Josephine Avenue
Rumford, RI 02916-3018**

“World War II Memories Roundtable”

Ray Anderson will conduct a structured discussion with WWII veterans **Joe Crevier, Lionel Hawkins, Ken Prior and Bob Wertz.**

Ray will ask *specific* questions of each. This generates a variety of attitudes and memories, which are synthesized and expanded into a general discussion. Very effective!

Did YOU mark your calendar?

New Renewal/ Change
EAST PROVIDENCE HISTORICAL SOCIETY

Name(s) _____

Street _____

City _____ State _____ Zip (+4) _____ Phone _____

Amount Enclosed: \$15.00 Family \$10.00 Individual \$150.00 Life

President's Letter

David Kelleher

Dear Members,

Happy New Year to all of you. May 2002 bring you health and happiness.

The December 10th catered holiday dinner was a great success. The food was great and it was delightful to have the tables set and to be served for a change. Thanks to **Billie Arden** and **Nancy Wolfe** for a job well done.

The John Hunt House Museum display of antique toys was successful according to **Edna Anness**. About 50 people attended the display. The new afternoon hours on Tuesdays and Thursdays and the good publicity for the two Sunday openings has increased attendance at the museum. Hopefully, we can continue this good attendance when we reopen in the spring.

At the January meeting we will be voting on bylaw changes concerning dues. As I have indicated in the past, we need to address finances since we are not meeting our expenses for maintaining the Hunt House, having good programs and publishing the newsletter.

The changes are: raising the dues for a single membership to \$15.00 and family membership to \$25.00.

The board continues to work on ways to save money and also to bring in more money. We have decided to charge a small fee for visiting the John Hunt House Museum. Members free, children free, residents \$1.00 and non residents \$3.00.

Thanks to **Ray Anderson**, we have come up with a better insurance policy that will save some money.

I hope that all of you will be able to take a trolley ride (via slides) with us on the 28th and join us for a Pot Luck-supper.

Sincerely,

Dave

NEW MEMBERS

Welcome to our recent new members:

Frank & Suzanne Dearney

Carol & Terence Owens

Ellen Spilewski



In Memory of

*Donations were made to the Society's
Memorial Fund
in memory of:*

Barbara Haywood

Sadly Missed . . . Fondly Remembered

The Society's Memorial Fund was established in 1993, in memory of past members, for "the betterment of the Society and with no specific purpose."

The Memorial Fund is a qualified endowment administered by the Executive Committee.

Members and friends wishing to contribute may make checks payable to the
East Providence Historical Society
and mail to the Society at
Box 4774, East Providence, RI 02916-4774

FROM THE ATTIC

Edna Anness, *Museum Curator*

There is an old saying that goes something like this, "One picture is worth a thousand words!" How true! This was abundantly true this past year.

Our first revelation was the picture of the Bishop's Tavern received from the Philip Walker House. It had hung for years in the Walker parlor before many of us, having heard that there WAS a Bishop's Tavern, finally laid eyes on the real thing - a large Georgian style center chimney building which once stood as a rest stop on the old Boston Post Road, now route 1A - Pawtucket Avenue enroute from Providence to Boston. It was at the curve on Pawtucket Avenue and Elmsgate Way in old East Providence Center. The Bishops were relatives of the Walkers. The building burned many years ago and until this year no one knew what it looked like.

The second surprise was when we received a picture of Depot Square in Rumford taken c.1912. It shows the old depot on Newman Avenue (now Elm Street) with no railroad bridge over the tracks on Greenwood Avenue, the old Britton Hay and Feed Store also on Newman Avenue (now the Beauty Salon turned to face Greenwood Avenue today), the "new" 1912 Rumford Post Office (now a nursery school) AND the original Hose Company No. 3 on the same site as the new fire station. This old volunteer hose co. was built by the Rumford Chemical Company on Greenwood Avenue before North Broadway was an accepted road. So you see, really, this is not a new idea for its location, but a new version of an old familiar site

There is a super photo of the original Helgerson Handy Shoppe (now the Handy Bake Shoppe) on Bishop Avenue with the yard wares displayed out front. A trip there on an errand for my mom was my early training as a comparison shopper -- or how much can I get for a nickel change? (It was the depression!)

We also have pictures of Tyler's Ice House on the West side of Central Pond (now the Reservoir) just off Redland Avenue.

So now my proposition for the readers is- do you have any as yet undiscovered photos from any part of "town". Let's say the gas station - drug store which stood at the rotary in Rumford between Pawtucket Avenue and Ferris Avenue or even one of the "Rotary". How about the horse trough at Armington's Corners, the circle in the middle of Six Corners, a trolley car at the Rumford Rotary, the old carbarn on North Broadway, the East Providence Roller Rink on Broadway, Bliss School on Orlo Avenue, Boyden's Shore Dinner Hall on South Broadway, the front of Singer's Market or Solomon's Store on Waterman Avenue ... Keep looking !! And Happy New Year!



..... 1000 Words .. (see page 5).

GIFTS RECEIVED IN DECEMBER:

George and Sylvia Amaral - new file box for the Museum.

Mona Breault - Orange squeezer, flour sifter, tea cozy, bag of curtains.

Helen Brush - Copy of "Eighty Years of Rumford Baking Powder History"

Marjorie Chase - Wall towel dryer, a mat and a 42 star U.S. flag.

Bo Gillette - Rumford cook booklet.

Dorothy Marshall - Effenbee Baby doll - c.1928, three hat boxes and two hats, bill head with advertising,, autograph album, earmuffs, pincushion and paper advertising.

Ruth Peirce - Photos of Depot Square in Rumford

Deborah Rochford - Photo of World War I East Providence Veteran's Welcome Home Celebration - 1919.

Clint Sellew - Copy of THE TRIGGER, 1918.

The Gazette ...

Welcomes "Members Memories"
and articles of historic interest

mail to:

Ray Anderson,
32 Algonquin Road,
East Providence, RI 02916-3502

..... 1000 Words *continued*

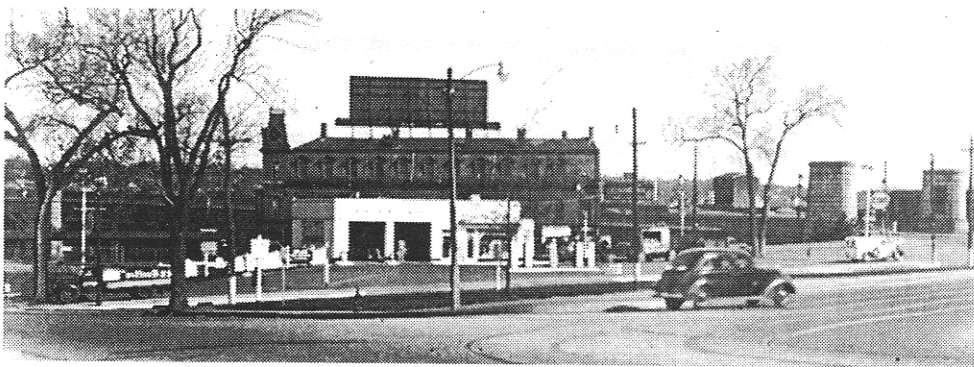
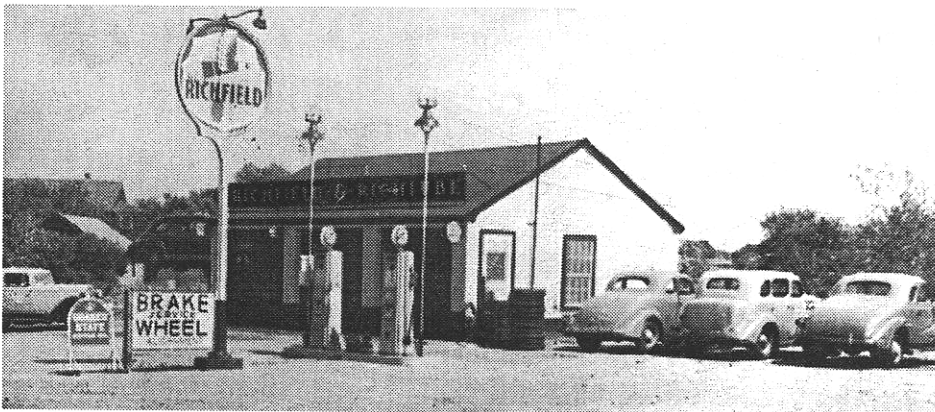
Here are a few “memory joggers” that have turned up from various sources gas stations come and go here are three that are no longer with us . . and some examples of other bygones.

Check those shoeboxes in the closet maybe YOU have a lost treasure ... that can be shared and enjoyed.

Please LOOK !



ed.





EAST•PROVIDENCE•HISTORICAL•SOCIETY
 P.O. Box 4774
 EAST PROVIDENCE, RI 02916

Non-Profit Organization
 U.S. POSTAGE
 PAID
 Providence, RI
 Permit # 2712

**RETURN
 SERVICE
 REQUESTED**

02916+2309 03



CALENDAR OF EVENTS

January

Monday, January 28, 6:00 PM Pot Luck Supper
7:30 PM Members Meeting
 Newman Church, Rumford. *Public Invited*
 Program: **Everett A. Chapman**
“Take the Trolley to the Shore”

February

Wednesday, February 6, 7:00 PM
 Board Meeting *members welcome*
 John Hunt House, Hunt’s Mills Road, Rumford.

Monday, March 25, 6:00 PM Pot Luck Supper
7:30 PM Members Meeting
 Newman Church, Rumford. *Public Invited*
 Program: **David Goldberg**
“Recycle and Recover”

March

Wednesday, March 6, 7:00 PM
 Board Meeting *members welcome*
 John Hunt House, Hunt’s Mills Road, Rumford.

Monday, March 25, 7:30 PM, Members Meeting
 Newman Church, Rumford. *Public Invited*
 Program: **“World War II Memories Roundtable”**
Ray Anderson, with Joe Crevier, Lionel Hawkins,
Ken Prior and Bob Wertz.

CHANGE of ADDRESS

The Society has a **“Return Service Requested”** arrangement with the Post Office.
There is a CHARGE every time we retrieve an undeliverable mailing Please advise the Society of all changes, temporary or permanent. Thank you for helping us save money.