

EAST • PROVIDENCE • HISTORICAL • SOCIETY



John Hunt House

# Gazette

Vol. XVI No. 7

April 2004

## ALHAMBRA CABARET



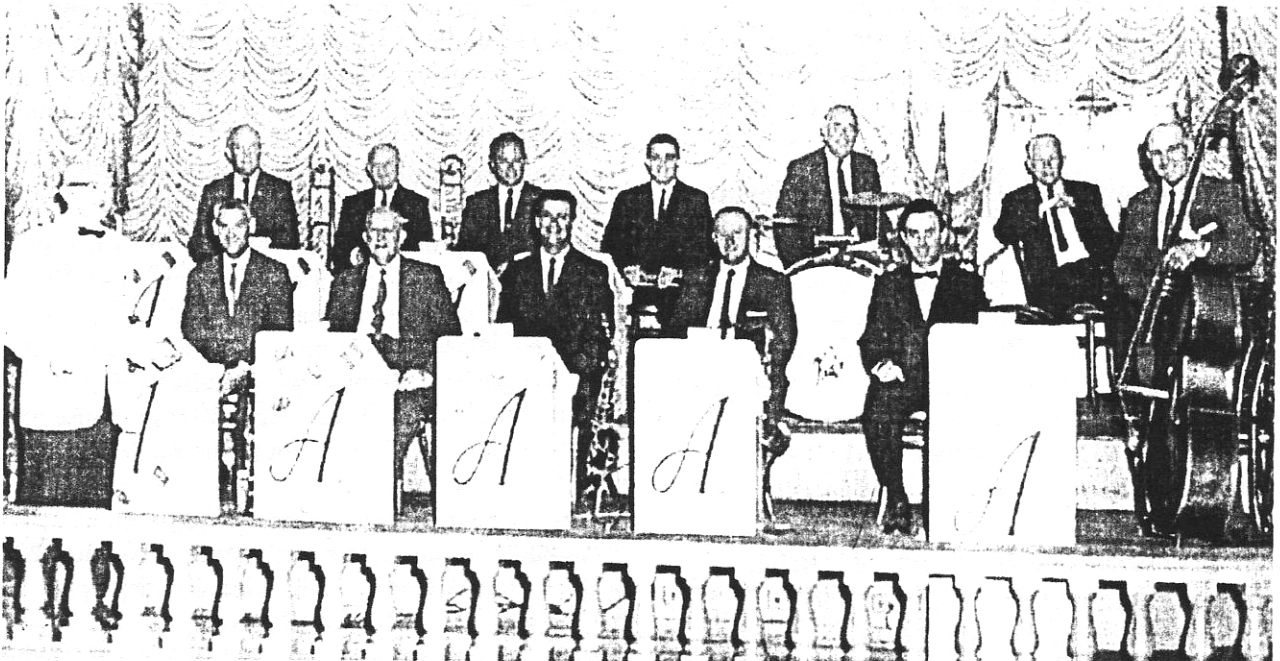
Monday, April 26, 7:30 pm  
Post 10 American Legion  
830 Willett Avenue, Riverside  
Donation: \$5 Per Person  
at the Door



The Alhambra, Crescent Park, was built in 1902 and flourished until its demise by a catastrophic fire on September 3, 1969. It served as a ballroom, exhibition hall, roller skating rink and East Providence High School reunion, square dance and tri-weekly bingo facility. The Strictly Sentimental Swing Band of Riverside will re-enact the years of ballroom dancing when *Charlie Weygand and the Alhambra Ballroom Band* was the toast of the town.

Tables for four or more will be set up. Kris Rose's Rainbow Punch and finger food, provided by the membership, will be available.

The affair will benefit the society and the Legion's Gilbert/Kremp Scholarship Fund.



*Charlie Weygand and the Alhambra Ballroom Band, 1950.*

*The Gazette*

Is published monthly by the  
**EAST ● PROVIDENCE ● HISTORICAL ● SOCIETY**  
 P. O. Box 4774, East Providence, RI 02916-4774  
 Tel: (401) 438-1750 Web Site: ephist.org

**OFFICERS**

<b>Kris Rose</b>	<i>President</i>
<b>Nancy Moore</b>	<i>1<sup>st</sup> Vice President</i>
<b>Edna Anness</b>	<i>2<sup>nd</sup> Vice President</i>
<b>Jeanne Davis</b>	<i>Recording Secretary</i>
<b>Arline Butterworth</b>	<i>Corresponding Secretary</i>
<b>Peter Allen</b>	<i>Treasurer</i>
<b>David Kelleher</b>	<i>Immediate Past President</i>

**COMMITTEE CHAIRPERSONS**

<b>Bob Tewksbury</b>	<i>Buildings</i>
<b>Ray Anderson</b>	<i>Grounds</i>
<b>Kris Rose</b>	<i>Markers</i>
<b>Mona Breault</b>	<i>Membership</i>
<b>Virginia Berwick</b>	<i>Museum</i>
	<i>Museum Curator</i>
<b>Doreen Bonney/Florence Adams</b>	<i>Newsletter</i>
<b>David Kelleher</b>	<i>Preservation</i>
<b>Ray Anderson</b>	<i>Program</i>
<b>Florence Adams</b>	<i>Publicity</i>
<b>Reinhard Wohlgemuth</b>	<i>Webmaster</i>

The East ● Providence ● Historical ● Society is dedicated to preserving the heritage and enjoying the history of our City.

If you are not a member we invite you to join now.

Annual dues are \$15 individual, \$25 family, or a Life Membership for \$150.

Please make check payable to:

**East Providence Historical Society**

and mail with form below to:

**Mona Breault, 34 Josephine Avenue,  
 Rumford, RI 02916-3018**

**Membership Form**     New     Renewal /Change

Name(s) \_\_\_\_\_

Street \_\_\_\_\_

City \_\_\_\_\_ State \_\_\_\_\_ Zip \_\_\_\_\_

Phone # \_\_\_\_\_

Amount Enclosed:

**\$25 Family**    **\$15 Individual**    **\$150 Life**

**Warm Welcome To Our New Members:**

**Lester Grace, Mary & Ben Hadsell,  
 Ruth Pace, and Mary Swanson**

**JOHN HUNT HOUSE MUSEUM**

**THE JOHN HUNT HOUSE MUSEUM,  
 HUNTS MILLS ROAD, RUMFORD  
 WILL BE OPEN SUNDAY, APRIL 18, 1 TO 4 PM,  
 AND SUNDAY, MAY 9, 1 - 4 PM  
 ADMISSION \$3; \$1 EAST PROVIDENCE  
 RESIDENTS; FREE, SOCIETY MEMBERS.**

The Gazette welcomes "Members Memories" and articles of historic interest.

Mail to the society: P.O. Box 4774, East Providence, 02916 or email via ephist.org.

**NOMINATING COMMITTEE**

**Virginia Berwick**, Chairman, **Gladys Panzarella** and **Helen Smith** comprise the **Nominating Committee** whose duty is to present a slate of candidates at the May members meeting to be considered for office from June 2004 to June 2005.

However, there could be opposition to their choices. Nominations from the floor will be accepted at the May meeting only. Any member wishing to seek office may contact the society, 438-1750, and get in the running. **Elections will be held at the Annual Meeting, June 28.**

**RECOGNITION DEPARTMENT**

'The Snowman Cometh', to paraphrase Eugene O'Neill., in the presence of **Andy Valerio**. Snow removal at the museum was taken on by Andy, a labor intensive duty the society very much appreciates. Give him a warm greeting next time you see him.

**Virginia Berwick, Marie Brand, Pat Henry, Kris Rose, Andy Valerio** (there he is again) did set-up and clean-up duty for the February Pot Luck supper. And what about Marie Brand you may ask. She won *Split-the-Pot*. A cruise may be in the offing!!

**Edna Anness, Virginia Berwick** (there she is again) **Janice Dillenbeck** and **Jeffrey Faria** offered their time at the John Hunt House Museum on Sunday, March 14; an open-to-the-public date which was well attended.

A meeting without finger food is like..... trout fishing without minnows. **Florence Adams, Mona Breault, Pat Henry** and **Helen Smith** supplied the 'minnows' for the March 22 meeting.

## PRESERVATION COMMITTEE

David Kelleher, Chairman

The East Providence Historic Properties Study and Designation Commission has begun the task of investigating the possibility of an ordinance to help preserve historic properties in the city. With the help of the Planning Department and Preserve Rhode Island, the members are looking at documents from other communities which are dealing with saving their properties. The city of Pawtucket seems to have a good ordinance and the members are looking into how the plan is working there.

Another area of study is the possibility of establishing a historic district for the Phillipsdale area, especially Roger Williams Avenue which has a large concentration of historic buildings. A meeting will be held with some of the residents of that area to discuss the possibility of a historic district and see if there is interest among them for such a project. The meeting will be held at the Grace Chapel, 130 Roger Williams Avenue, on April 20th at 6:30.

A report from the state preservation commission was sent to Citizens Union Bank concerning the 18th century house at 325 North Broadway. The report stated that the house did have elements that prove it to be of the 18th century and that it and the barn and the canoe building were of significant historical value and an important part of the history of the area. Due to certain federal regulations for banks and historic properties, this report "may" interfere with the proposed use of the property by the bank.

Progress continues with contractors for the restoration of the Weaver House on Grove Avenue. The restoration will begin this spring.

Discussion will continue with the future of the Brown Williams Cottage at Hunts Mills. The cottage has been boarded up and since many of the surrounding trees and bushes have been removed, the cottage stands out more and its boarded up condition is not a pleasant site to see.

Dave Kelleher

### CHANGE OF ADDRESS

The Society has a "Return Service Requested" arrangement with the Post Office. *There is a CHARGE every time we retrieve an undeliverable mailing.....* Please advise the Society of all changes, temporary or permanent. Thank you for helping us save money.

## EAST PROVIDENCE HISTORIC SITES BUS TOUR

Do you know all the historic sites in East Providence? If not, why not take a tour in a double-decker bus and see why East Providence is.....HISTORICAL. Saturday, May 15th, 10 am - 12 noon. Leave from the John Hunt House Museum, Hunts Mills Road, Rumford. Tour Guide: Dave Kelleher. Historical society members \$12. EP Chamber of Commerce members (co-sponsors) \$12. General Public \$15. RESERVATIONS; EP Chamber of commerce, 438-1212.

### TAG SALE FUNDRAISER

PRESERVE RI is protecting Rhode Island's historic structures and unique places for present and future generations. On Saturday, May 15, 8 am to 2 pm (rain date May 16) Preserve RI will sponsor a yard sale on the lawn of the Philip Walker House, 432 Massasoit Avenue (corner N. Broadway). All proceeds from the sale will directly benefit the Philip Walker House. Preserve RI is in the process of raising funds to beautify the property and restore the interior of the house.

Turn your trash into someone else's treasure! Arrange to drop off your goods directly at the Walker House one or two days prior to the sale. If this is not possible, Preserve RI will arrange a pick-up at your home. Call 272-5101 for details.

*Hone your bartering skills by volunteering to work a sales table. **CONTRIBUTE TO THE BAKE SALE!** Spread the word to family and friends. Stop by to find a treasure!*

### Gifts to the Museum

- Ethel Coyle- First Edition Stamp Commemorative envelopes
- John Agren- Framed set of 2nd World War medals earned by John and his brothers Edgar and Emil
- Beth Costa- Antique crossword picture puzzle
- Harriet Sharpe- Assorted East Providence High School paper memorabilia
- Edna Anness- Antique silver-plated shaving mug with brush

Thanks due to Elmer Yeaw for locating and making available a photo of George Newman Bliss so that we could copy it and have his picture to go with his Hall of Fame Certificate.



East • Providence • Historical • Society  
P.O. Box 4774  
East Providence, RI 02916

Non-Profit Organization  
U.S. POSTAGE PAID  
Providence, RI  
Permit #2712

RETURN SERVICE REQUESTED

## CALENDAR OF EVENTS

### APRIL

Sunday, April 18, 1 - 4 pm  
John Hunt House Museum  
Hunts Mills Road, Rumford  
Admission \$3; \$1 EP residents; Free society  
members.

Monday, April 26, 7:30 pm  
*Alhambra Cabaret/*  
*Strictly Sentimental Swing Band*  
Post 10, American Legion  
830 Willett Avenue, Riverside  
Benefit Legion Scholarship/Historical Society  
Donation: \$5 at the door

### MAY

Wednesday, May 5, 7 pm  
Board Meeting *Members Welcome*  
John Hunt House Museum  
Hunts Mills Road, Rumford

Saturday, May 15, 10 am - 12 noon  
*EP Historic Sites Bus Tour*  
Leave from John Hunt House Museum  
Society and EP Chamber of Commerce (co -sponsor)  
members \$12; General Public \$15  
Reservations: EP Chamber of Commerce, 438-1212

Saturday, May 15, 8 am - 2 pm (Raindate May 16)  
*Tag Sale Fundraiser*  
Philip Walker House Lawn  
432 Massasoit Ave (corner N. Broadway)  
Sponsored by Preserve RI  
Tel. 272-5101

Monday, May 24, 7 pm  
Members Meeting *Public Invited*  
Newman Church, Rumford  
*Program to be announced*