

# EAST · PROVIDENCE · HISTORICAL · SOCIETY

# GAZETTE

Vol. X No. 1

September 1998

## EXHIBITION

**"CRESCENT PARK:  
CONEY ISLAND OF THE EAST"**



September 27, 1998

### RECEPTION AND OPENING OF THE EXHIBITION

*Sunday from 1:00 to 4:00 p.m. at the*

*John Hunt House Museum*

*Hunts Mills Road, Rumford*

**The exhibit will be open every**

**Tues. and Thurs., 9 a.m. - 12 noon,**

**Sundays, 1 - 3 p.m.**

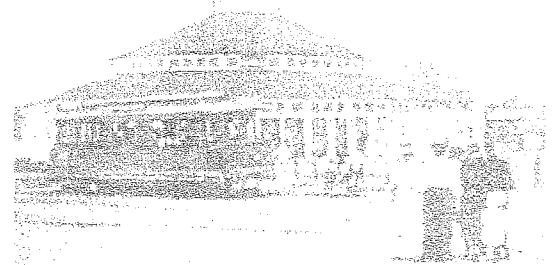
We have received partial funding of the exhibit from the **Rhode Island Committee for the Humanities** and we have funds left over from the **Cape Verde Exhibition** which the R.I. Foundation said we could use on another exhibition. The **Champlin Foundation** has given the society a grant for bus transportation to the museum for East Providence public school fifth grades.

Do come on September 27<sup>th</sup> and support our effort and those of the **East Providence Carousel Commission** and the **Historical Society** who have planned this event and fall programs associated with it.



## "OLD FASHIONED NIGHT AT THE PARK"

EAST PROVIDENCE PUBLIC LIBRARY  
WEAVER MEMORIAL LIBRARY



### SEPTEMBER MEMBERS MEETING

**September 28<sup>th</sup> 6 - 8 pm at the**

**CRESCENT PARK CAROUSEL**

**Come join us! Rain or Shine!**

**Ride the Carousel and eat Chowder and Clamcakes (original Crescent Park recipe).**

**MEMBERS\* and their GUESTS, only!**

\*(one of your membership perks)

We will have a membership list handy.

You can become a member that night.

**\$5.00 buys Chowder and Clamcakes and**

**Two hours of Free Rides.**

(\$2.00 for Carousel Admission only) *drinks extra.*

**Ron Joynes will explain the operation of the Carousel.**

We need an estimate of "eaters" for the cooks to prepare the clamcakes and chowder. You will be polled by phone, or call the Hunt House and leave a message by **September 21<sup>st</sup>**.

*Co-sponsored by the Crescent Park Carousel Commission.*

**What a Weekend!**

**Sunday at the Exhibit Opening...**

**Monday at the "Park"**

## Board Briefs

The East Providence Historic Properties Study Commission will meet on Thursday, October 1, 7:00 pm at the Squantum Club. **Dave Kelleher**, Chairman, is also Vice President of the Historical Society.

Also, the Rhode Island Society of Colonial Wars will sponsor a dinner/lecture on Tuesday, October 13, at the Squantum Club. **Jill Lepore**, Boston University historian and author of **The Name of War: King Philip's War and the Origins of American Identity** will speak. Cocktails at 6:00, dinner at 7:00, lecture at 8:15. Cost is \$40. For information and reservations call **Jonathan Farnum**, 397-9043 or 724-8800 Ext. 116.

### The GAZETTE

is published monthly by the  
EAST•PROVIDENCE•HISTORICAL•SOCIETY  
P.O. Box 4774, East Providence, RI 02916-4774  
(401) 438-1750

#### OFFICERS

President	Les Haworth
1 <sup>st</sup> Vice President	Nancy Moore
2 <sup>nd</sup> Vice President	David Kelleher
Recording Secretary	Betty Soderlund
Corresponding Secretary	Gladys Panzarella
Treasurer	Rose Marie Sirenski

#### COMMITTEE CHAIRMEN

Buildings/ Grounds	Earl Berwick
Markers	Ray Anderson
Membership	Kris Rose
Museum	Mona Breault
Museum Curator	Virginia Berwick
Newsletter	Edna Anness
Preservation	Doreen Bonney
Publicity	Les Haworth
	Florence Adams

The  
GAZETTE  
is printed at



3 Crescent View Avenue, Riverside

## From the Attic

*Edna Anness, Museum Curator*

**John "The Barber" Soteris** donated to the Museum 54 early photos of areas around the Seekonk River at the behest of **Ned Connors** who, as a consultant on local history, visits the museum frequently. The **Rhode Island Historic Preservation Commission** considered the old photos a great historic find even though they were in need of being photographed before they deteriorated further.

**BANK RI** has opened and will dedicate a new branch on Pitman Street in Providence on September 11<sup>th</sup>. The bank provided a \$3,000 grant to us to fund reproduction of the photos by **Aaron Usher**. Ned researched and curated the collection and located the descendants of the photographer. Framed reproductions of some of the photos will decorate the walls of the new bank and recognition will be given to the **East Providence Historical Society** as the owners of the originals. We have also received beautiful clear copies of the originals along with the negatives. Now if someone wants to see these photographs, we do not have to disturb the fragile old photos, but can bring out the copies for study.

Representatives of the Society will be present at the dedication at 4:00 pm, September 11, 1998.

### Plea for Volunteers

**WE NEED VOLUNTEERS TO HELP WITH THE FALL SUNDAY OPENINGS AT THE HUNT HOUSE AND THE CHILDREN'S TOURS!**

Please come forward to volunteer. If we are to provide these museum services to the community we need your help. Non-members are also welcome to help. By helping, you will get to know us and meet your neighbors.

On Sundays you only have to sit in the display rooms, or work on the gift counter. With the Children's Tours, you show them the display in each room and watch over it.

**IT CANNOT BE OVER-EMPHASIZED  
HOW MUCH WE NEED YOUR HELP!**

## New Members

**Warm Welcome to Our New Members**

**James Reed**

**Bob McCarthy**

**Amelia Cabral**

**Jesse and James Pacheco**

**Bradford and Thelma Stone**

**Philomena Bucci**

# Saint Mary's Episcopal Church

by David Kelleher

Saint Mary's Episcopal Church, located at 83 Warren Avenue, was founded in 1871 as a mission of St. Stephen's Church, Providence.

The church, built around 1872, is a rectangular, one and one-half story, gable-roofed, wood frame structure on a stone foundation.

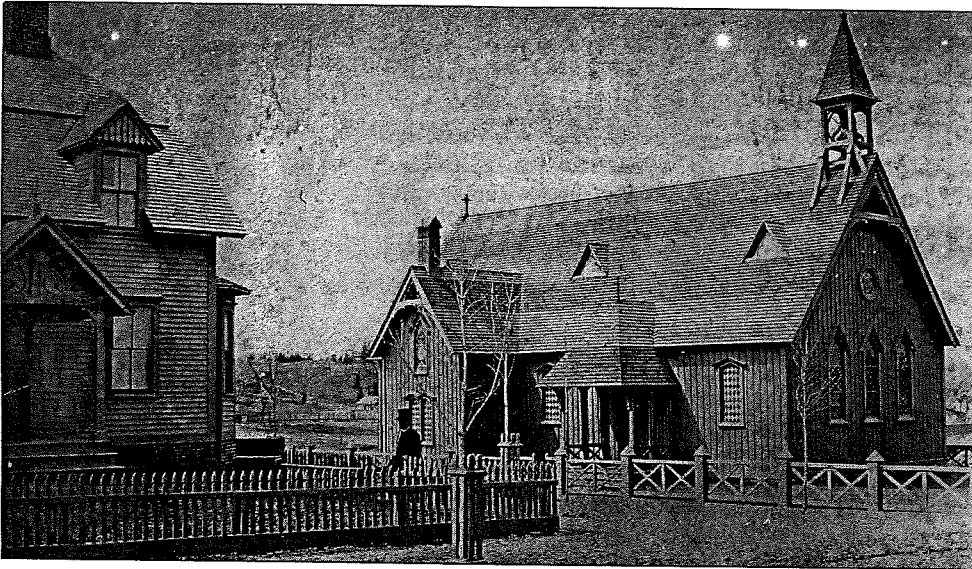
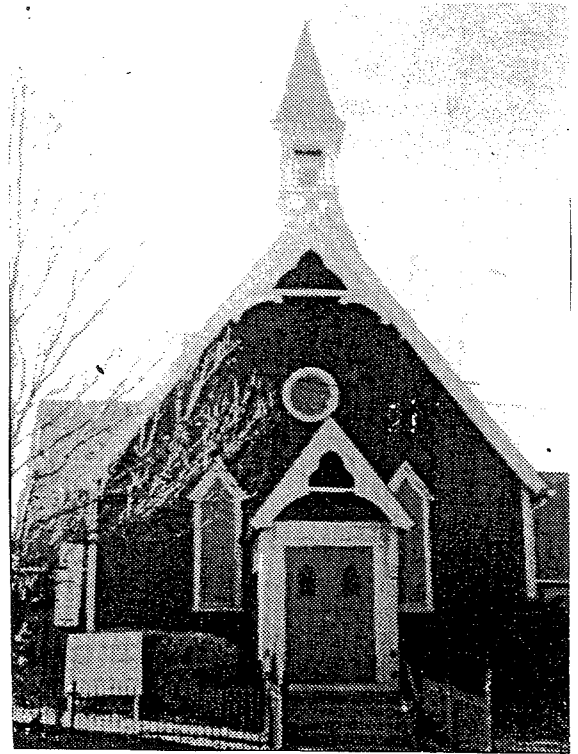
It is three bays wide and five bays long. Several elements project from this mass: a small one-story gable-roofed vestibule on the front (north side) of the building; a deep, one-story hip-roofed bay and a one and one-half story gable-roofed transept-like wing on the east side; and a one and one-half story parish hall on the west side which extends around the rear (south side) of the church.

The present vestibule is a later addition (probably dating from about 1889); the projecting bay on the east, now a baptistery, originally served as the entrance. The church roof contains three triangular dormers on each side and is surmounted at the front by an open timber belfry with a tall, pyramidal roof.

The windows of the sanctuary have triangular tops and there are small circular windows in the front and rear gables, and a pair of pointed windows on the side gable.

Exterior wall surfaces were originally sheathed with board-and-batten siding, but have been covered with shingles since about 1889.

The portion of the parish hall west of the church was constructed at the same time as the church. A new, larger parish hall was constructed south of the church in 1914.



The church interior is a single large room open through to the roof. The roof is supported by arched timber trusses and is pierced by the triangular dormers. A gothic arch on the east wall opens into the baptistery, but the larger "transept" contains the organ mechanism and is screened off by a row of organ pipes.

Throughout the church, walls have oak wainscoting with painted plaster above and a wooden reredos with tracery panels rising behind the altar. The stained glass windows - some memorials to parishioners - were installed at different times and date from 1872 to 1971.

- reprinted from *East Providence Post*, Feb. 19, 1998.

David Kelleher is Chairman of the East Providence Historic Properties Commission and Vice President of the East Providence Historical Society.

**The East Providence Historical Society is dedicated to preserving the heritage and enjoying the history of our city. If you are not a member, we invite you to join now.**

Annual dues are \$10, individual or \$15, family.

Please make check payable to **East Providence Historical Society**

Mail with coupon below to:

Mona Breault  
34 Josephine Avenue  
Rumford, RI 02916

New     Renewal

Amount Enclosed \$ \_\_\_\_\_

Name(s) \_\_\_\_\_

Street \_\_\_\_\_

City \_\_\_\_\_ State \_\_\_\_\_

Zip \_\_\_\_\_ Phone \_\_\_\_\_





EAST•PROVIDENCE•HISTORICAL•SOCIETY  
P.O. BOX 4774  
EAST PROVIDENCE, RI 02916

Non-Profit Organization  
U.S. POSTAGE  
PAID  
Providence, RI  
Permit # 2712

## Events Calendar

### SEPTEMBER

Sunday, September 27, 1 - 4 p.m.

**"CRESCENT PARK: CONEY ISLAND OF THE EAST"**  
RECEPTION AND EXHIBITION OPENING  
John Hunt House  
Hunts Mills Road, Rumford



Sunday, September 27, 1 - 4 p.m.

*Weaver Library Birthday Celebration*



Monday, September 28, 6 - 8 p.m.

**"OLD FASHIONED NIGHT AT THE  
PARK"**  
*Crescent Park Carousel, Riverside  
Rain or Shine*



*Visit Both!!*



### OCTOBER

October 10, 1998

*House Tour* for 55<sup>th</sup> Reunion Class from  
East Providence High School

October 11, 1998

*Bus Tour*, Conway Tours, sponsored by  
Blackstone Valley National Heritage Corridor  
*The Hunt House* is a stop on the tour.